



Build Limitless® Wall-Mount Rack

Installation Instructions

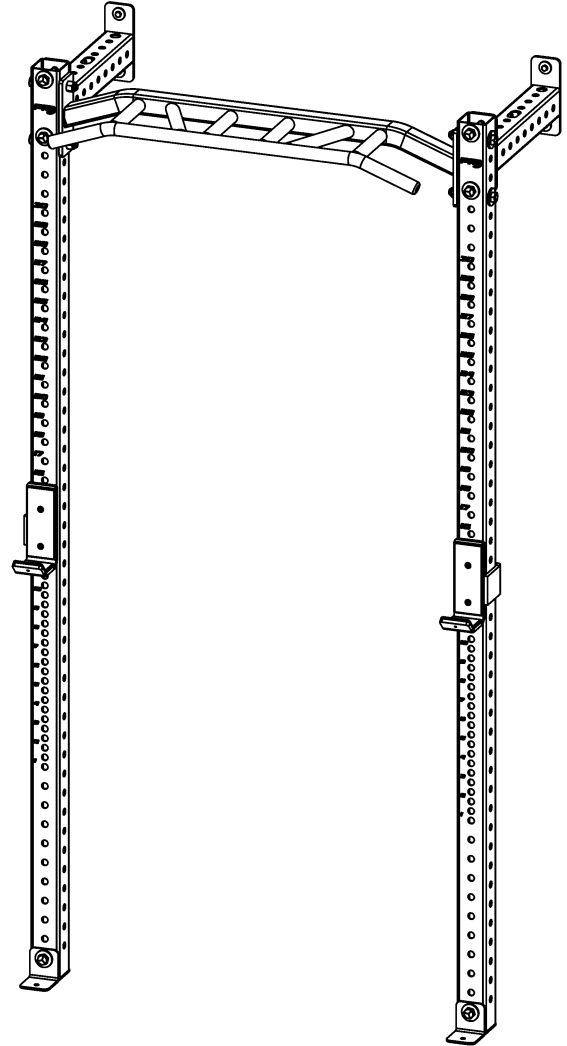
Tool List

- 15/16" Box End Wrench
- 15/16" Socket
- 1/2" Socket
- Ratchet or Impact Driver
- Cordless Drill
- 7/32" Drill Bit
- Stud Finder
- Tape Measure
- Pencil
- Level

Additional Items Needed (not included):

1. 2x10 Ledger Board, (minimum 50" long)
2. Mounting Hardware for Ledger Board
3. Floor Mounting Hardware

Item #	Description	Qty.
1	Upright	2
2	Multi-Grip Pull-Up Bar	1
3	Crossmember	2
4	Lag Screw Spacer	4
5	5/8" Ny Lock Nut	10
6	5/8" Flat Washer	12
7	5/8" x 4-1/4" Hex Bolt	6
8	5/16" Lag Screw	4
9	5/16" Flat Washer	4
10	L - Foot	2
11	5/8" x 4-1/2" Hex Bolt	4
12	J-Cup Pair	1



WARNING

- Read all assembly, installation and use instructions in this manual prior to using this equipment.
- Inspect equipment prior to use. DO NOT use if it appears damaged or inoperable
- Use equipment only for the intended use DO NOT modify the machine
- DO NOT attempt to fix broken equipment. Call or email PRx Performance for assistance.

Save this manual for future reference.

All questions, feedback, and return information should be sent to: support@prxperformance.com or call us at 1-701-566-0452

Installation Instructions

Rack Assembly:

1. Attach Crossmembers (3) to the back side of Uprights (1) with the hardware shown. **Figure 1**
NOTE: Make sure the crossmembers are oriented as shown on Detail A with the long side of the end plates on top, and the short side on the bottom.
2. Attach Multi-Grip Bar (2) between the Uprights (1) as shown in Detail A.

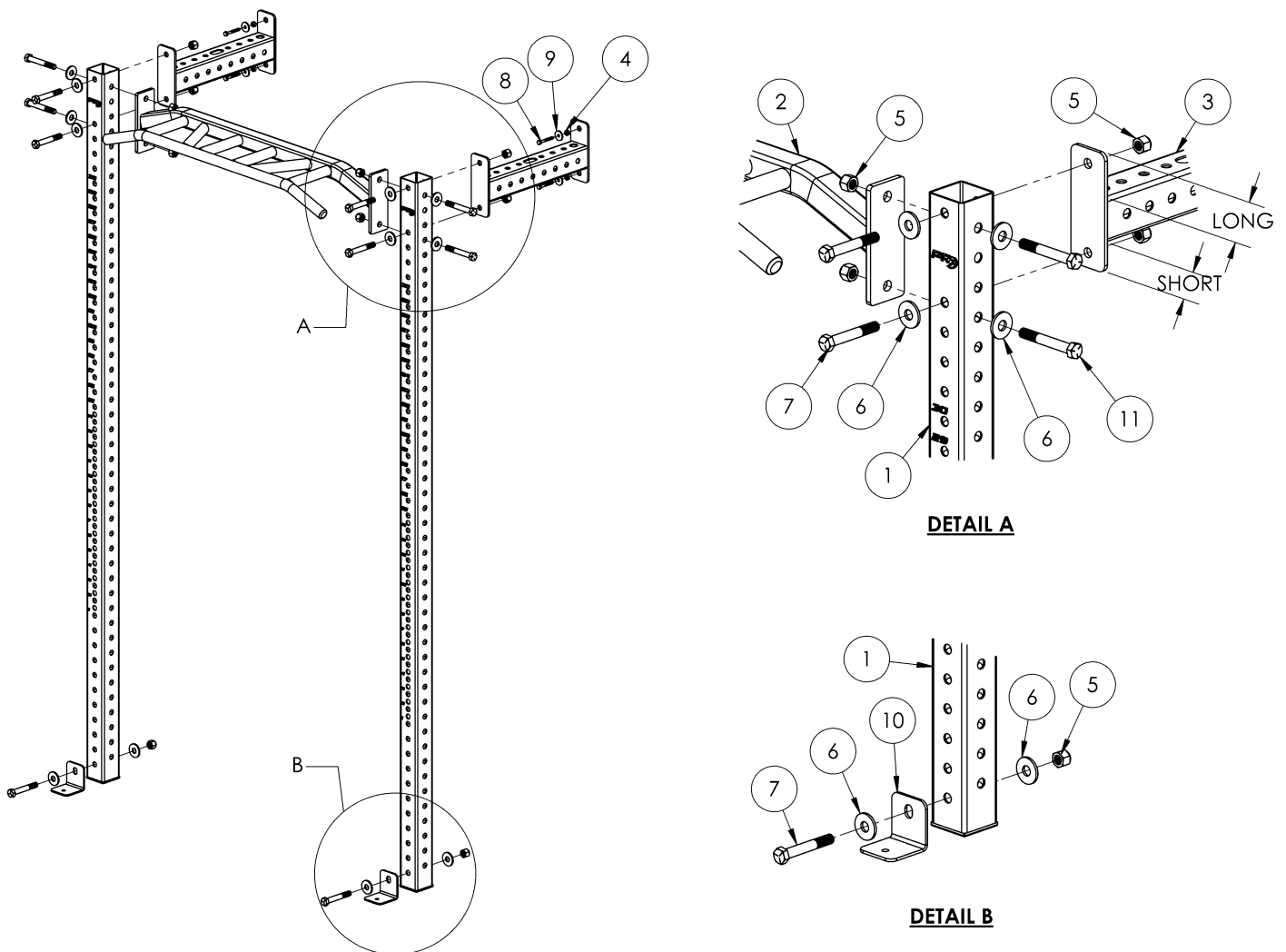


Figure 1

All questions, feedback, and return information should be sent to: support@prxperformance.com or call us at 1-701-566-0452

Ledger Board Installation:

The Ledger Board is not included. Your 2x10 ledger board should be a minimum length of 50", and long enough to attach to at least 3 studs, for safety and security.

1. Locate studs in the area you want to place your rack.
2. Measure from the floor to where the bottom of the ledger board will be placed. For 95" uprights, this distance is 86 ½". For 89" uprights, this distance is 80 ½". For 81" uprights, this distance is 72 ½".
3. Attach the ledger board to each stud, with a minimum of 2 screws per stud.

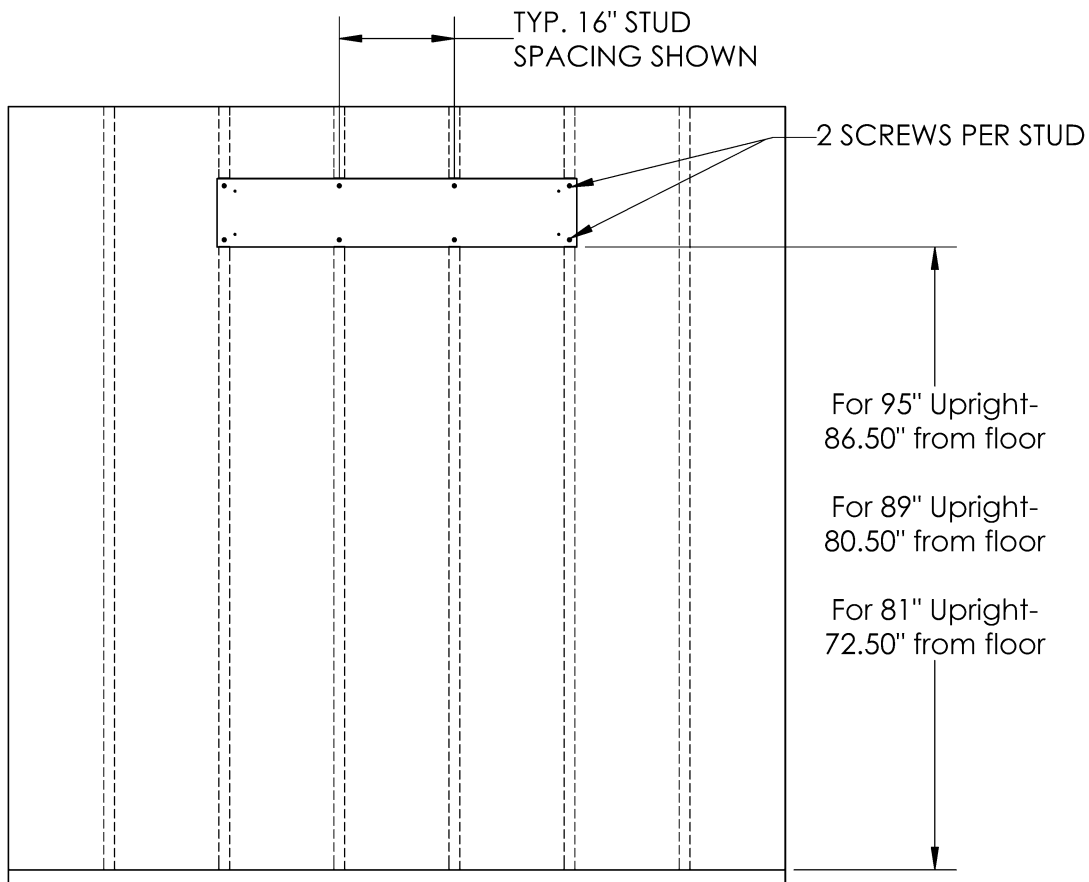


Figure 2

All questions, feedback, and return information should be sent to: support@prxperformance.com or call us at 1-701-566-0452

! WARNING: SERIOUS INJURY OR DEATH COULD OCCUR IF SAFETY PRECAUTIONS ARE NOT TAKEN.

Attaching Rack to Ledger Board

1. Once the Ledger Board is installed, place your assembled rack against the ledger board as shown. **Figure 3**
2. Make sure uprights are parallel to the wall before marking and drilling pilot holes for mounting.
NOTE: Uprights being parallel to the wall is critical should you choose to add components such as a functional trainer to your wall mount rack.
3. Have a second person hold the rack in place while you mark the hole locations and drill pilot holes using a 7/32" drill bit.
4. Attach rack to wall with hardware provided. **Figure 3, Detail A**
5. Attach L - Feet (10) to the bottom of the uprights (1) if you haven't already. **Figure 1, Detail B**
6. Make sure bottom of uprights are 42" apart before anchoring to the floor.
7. Once rack is anchored to the floor, make sure all the hardware is tight.
8. Attach J-Cups (12) onto your uprights.

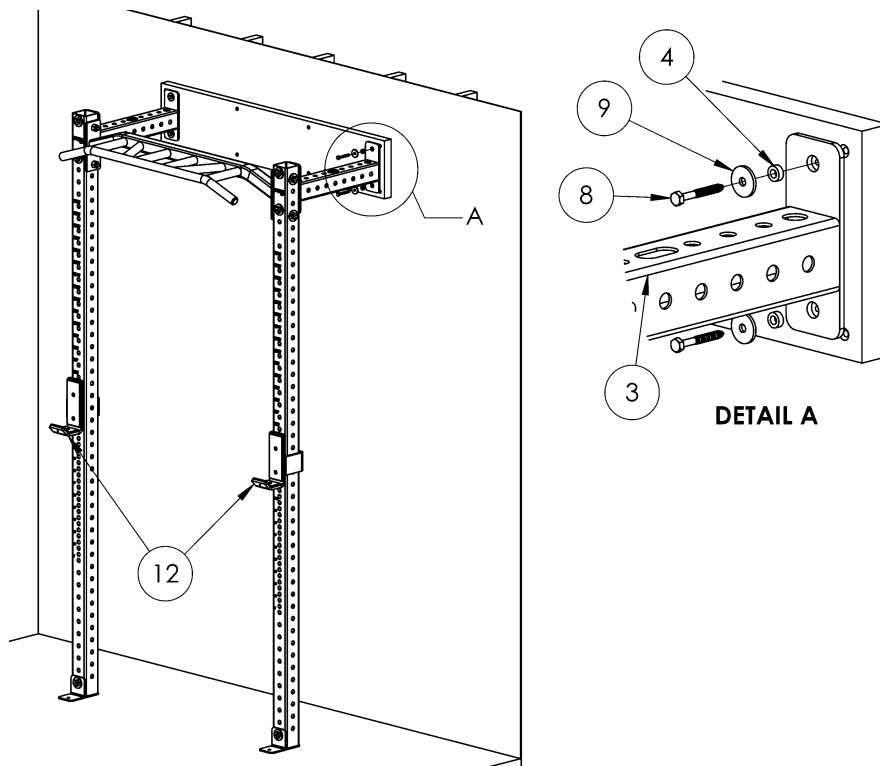


Figure 3

All questions, feedback, and return information should be sent to: support@prxperformance.com or call us at 1-701-566-0452