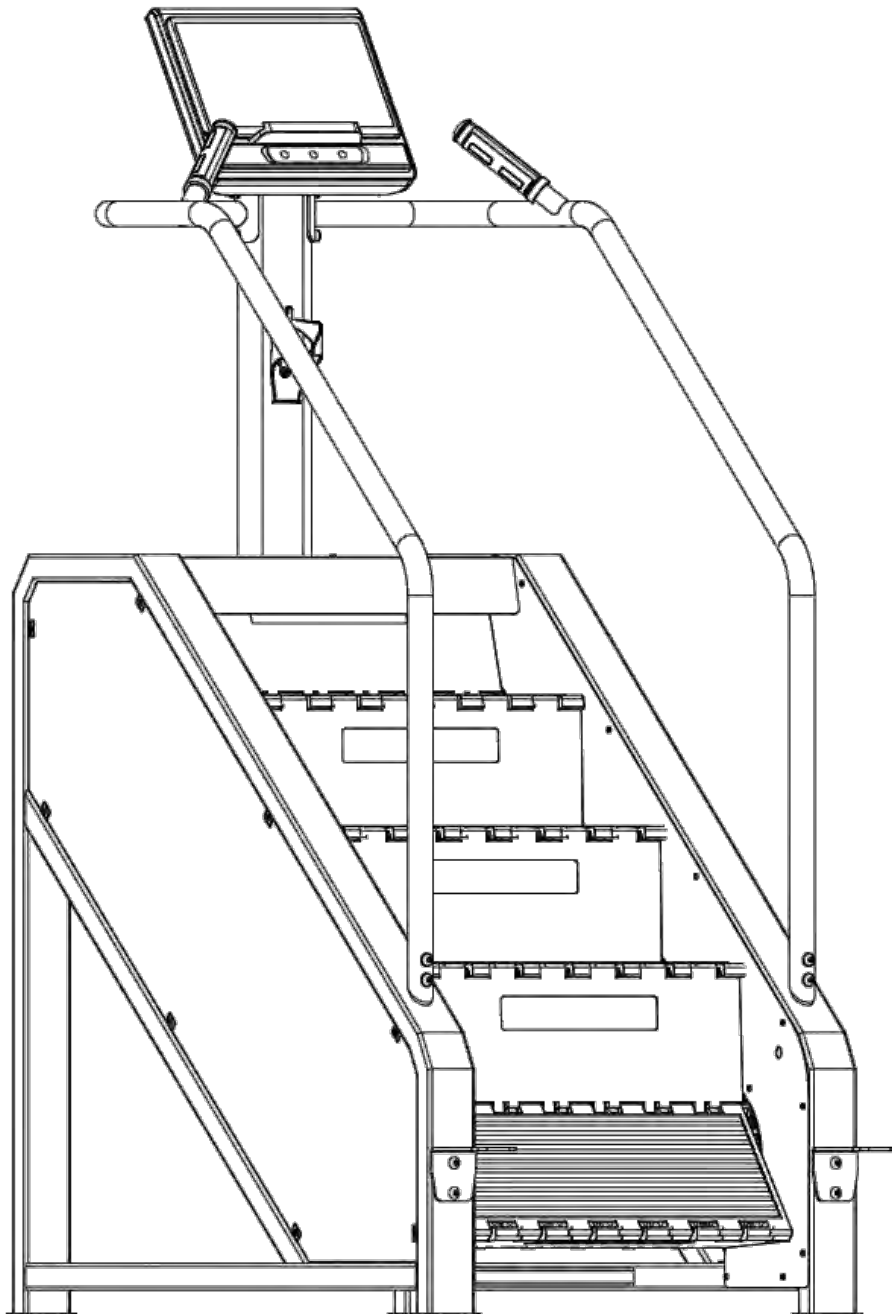




# Light Commercial Stair Climber (LC-SC)



## Instalaltion Manual

## **Catalogue**

**1. Safety Precautions**

**2. Technical Standards**

**3. The Installation Process**

**4. Stair climber operating instructions**

**5. Routine maintenance**

# 1. Safety Precautions

Read all precautions and instructions in this manual before using this equipment.

1. The machine is suitable for commercial fitness clubs, clubhouse fitness, bodybuilding training, sports training, physical education and so on.
2. The stair climber is suitable for indoor use, not for outdoor or high humidity, does not allow water or other liquids to be splashed on the machine, does not allow the placement or insertion of any foreign objects on the stair climber
3. Use the Stair climber should ensure its 4 feet on the ground, and placed a smooth, reliable, and the stair climber should retain the fuselage behind the safety of the 2000 mm \* 1000 mm space.
4. Recommend the use of running machine wear sportswear and proper sports shoes, The first time you use this device, you must have professional guidance. In the event of an emergency, you need to stop the machine immediately.
5. Don't allow two or more than two people at the same time on the treadmill exercise, this tester Max users weight is 170 kg.
6. The action guidance:
  - A. Aerobic exercise : energy consumption, improve cardiopulmonary skills, accelerate the blood circulation, improve human quality, achieve weight loss, toning.
  - B. If it is the first time use stair climber, need to holding the handrail, to keep the balance of the body.
  - C. Adjust resistance, be sure to adjust slowly, adjustment as far as possible.
  - D. People walk down the stair climber in case of confirming safety.
7. Any part of treadmill can not be in loose status.
8. Incorrect or overload training may cause the damage of the magnet resistor and controller, accelerate the aging transmission system, even bodily injuries.
9. Never touch any parts of stair climber with your finger
10. People with long hair should pay attention to the safety of hair when using.
11. When you feel uncomfortable and unusual, pls stop at once and consult to the doctor.
12. Before each use, ask the professional to check whether the transmission parts are fastened, if there is loosening, please fasten or replace in a timely manner.
13. There must be the mark of stoping using when the machine is in maintenance.
14. If the treadmill has abnormal sound or other abnormal conditions, please stop running immediately and contact our after-sales department in time, or seek professional help.
15. In the lower right corner of the stair climber installed with a photoelectric switch, if the object is detected to block, the staircase will immediately stop, pay attention to safe use;
16. Before each use of the stair climber, to confirm whether the brakes have been the brake magnet resistor, the detection method is: No click to start the case, under the stair climber pedal stair machine, if the steps will not continue to move, then the brakes have no problem can be used, if the steps continuous movement, it is strictly prohibited to use and contact us to change brake.
17. Please use within the voltage permitted range, input voltage demand AC110V - AC240V;
18. This machine is confirmed to the type of CS in EN 957-6.

## **2. Technical Standards**

Input power supply voltage: AC110V—AC240V

Time display range: 0:00 - 99:59

Floors display range: 0.00—999.9

Heat display range: 0-999 (Kcal)

Level display range: 0 - 15

Step number display range: 0 - 9999

Power cord specification: 10A AC250V

Running speed: 24 steps / minute - 164 steps / minute

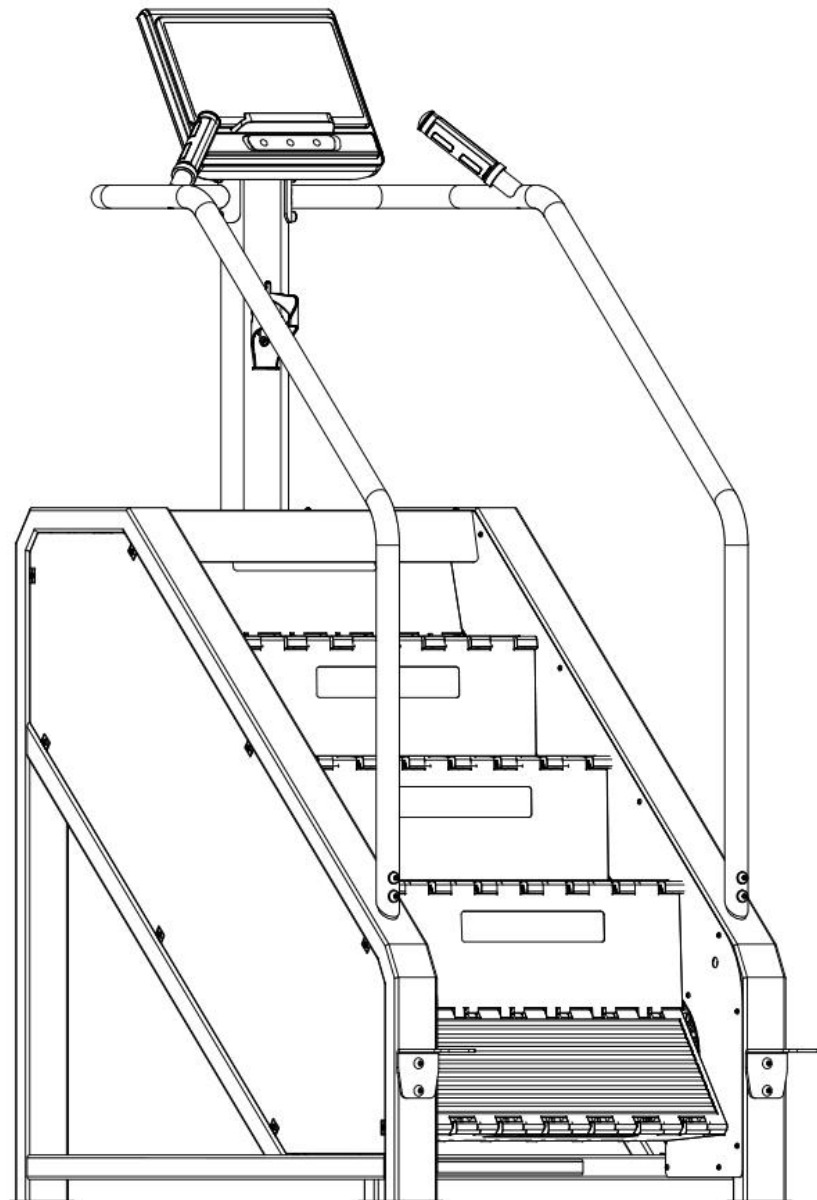
### 3.The Installation Process

Assembly instructions:

So that easy assembly is the principle

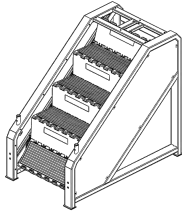
All of this section is intended to ensure that the stair machine can be assembled correctly and easily.

- Because the size of the stair machine is large, please select the assembly location where the stair machine will be placed and ensure there is enough space around the stair machine.
- Place all parts of the stair machine in the empty area and remove all packing materials. Do not discard the packing materials until the assembly work is completed.
- All bolts must be tightened during the assembly process unless otherwise stated, and all bolts must be tightened after the assembly work is completed.
- When assembling the stair machine, make sure all parts are assembled according to the assembly drawing

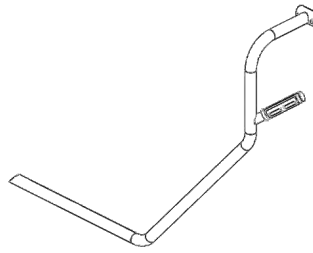


## Part list 1 :

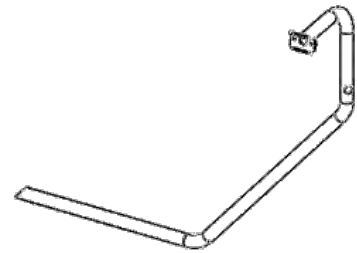
No.1 Stair master main frame\*1pc



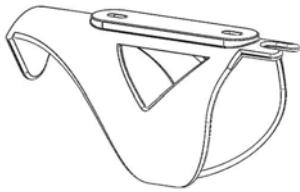
No.2 Left armrest\*1pc



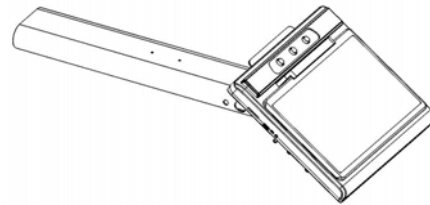
No.3 Right armrest\*1pc



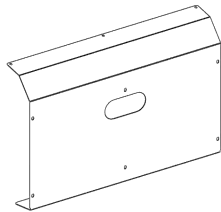
No.4 Water Bottle Holder \*1pc



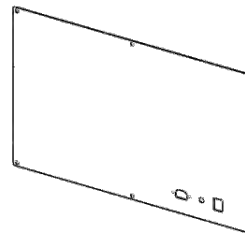
No.6 Display assembly\*1pc



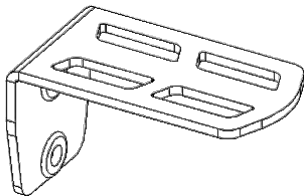
No.11 Upper Shroud\*1pc



NO.12 Rear guard\*1pc

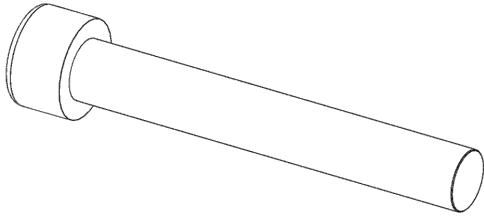


No.13 Footplate\*2pcs

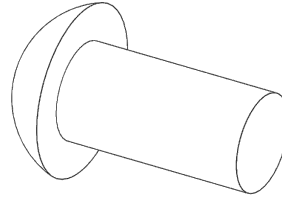


## Part list 2:

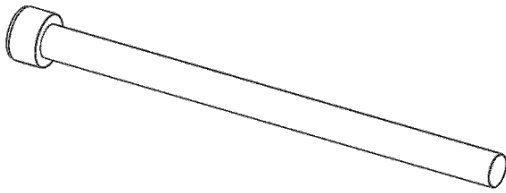
A:M8X55 cheese head screws 2 pcs



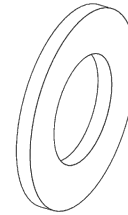
B:M10X20 flat round head screws 4 pcs



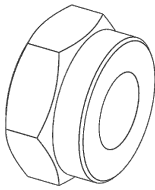
C:M10X150 cheese head screws 2 pcs



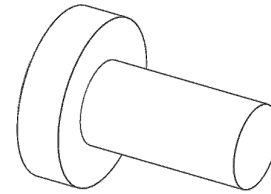
D:φ10 flat washer 6 pcs



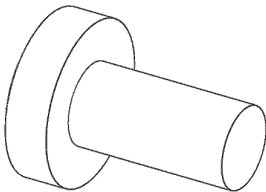
E:M10 jam nut 2pcs



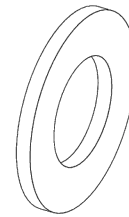
F:M4X8Crossed cheese head screws 15 pcs



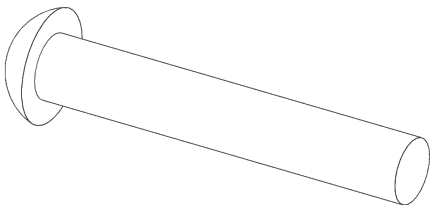
G:M5X10Crossed cheese head screws 2 pcs



M:φ8 gasket 2 pcs



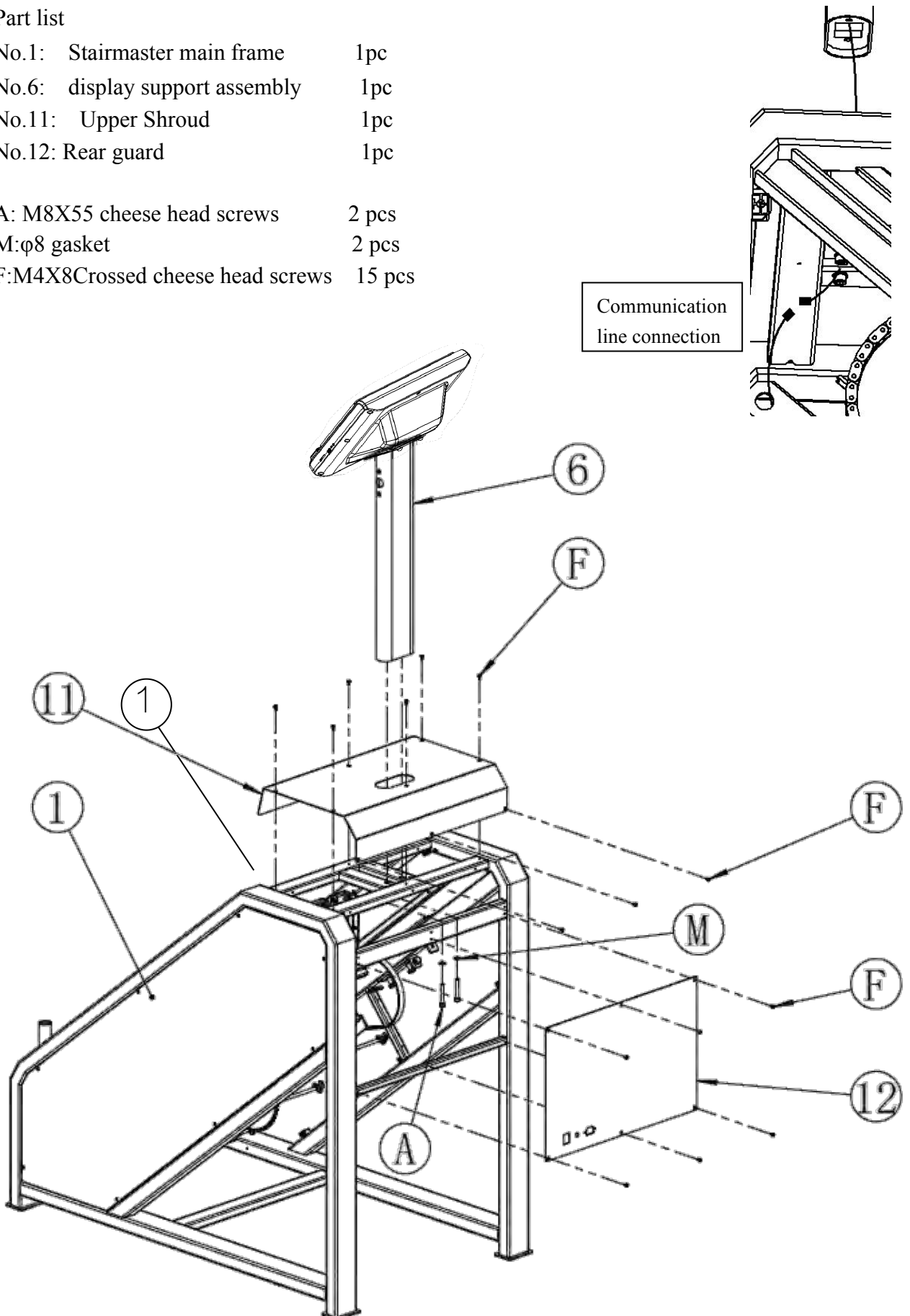
P:M10X60 flat round head screws 4pcs



## Assembly step 1 :

### Part list

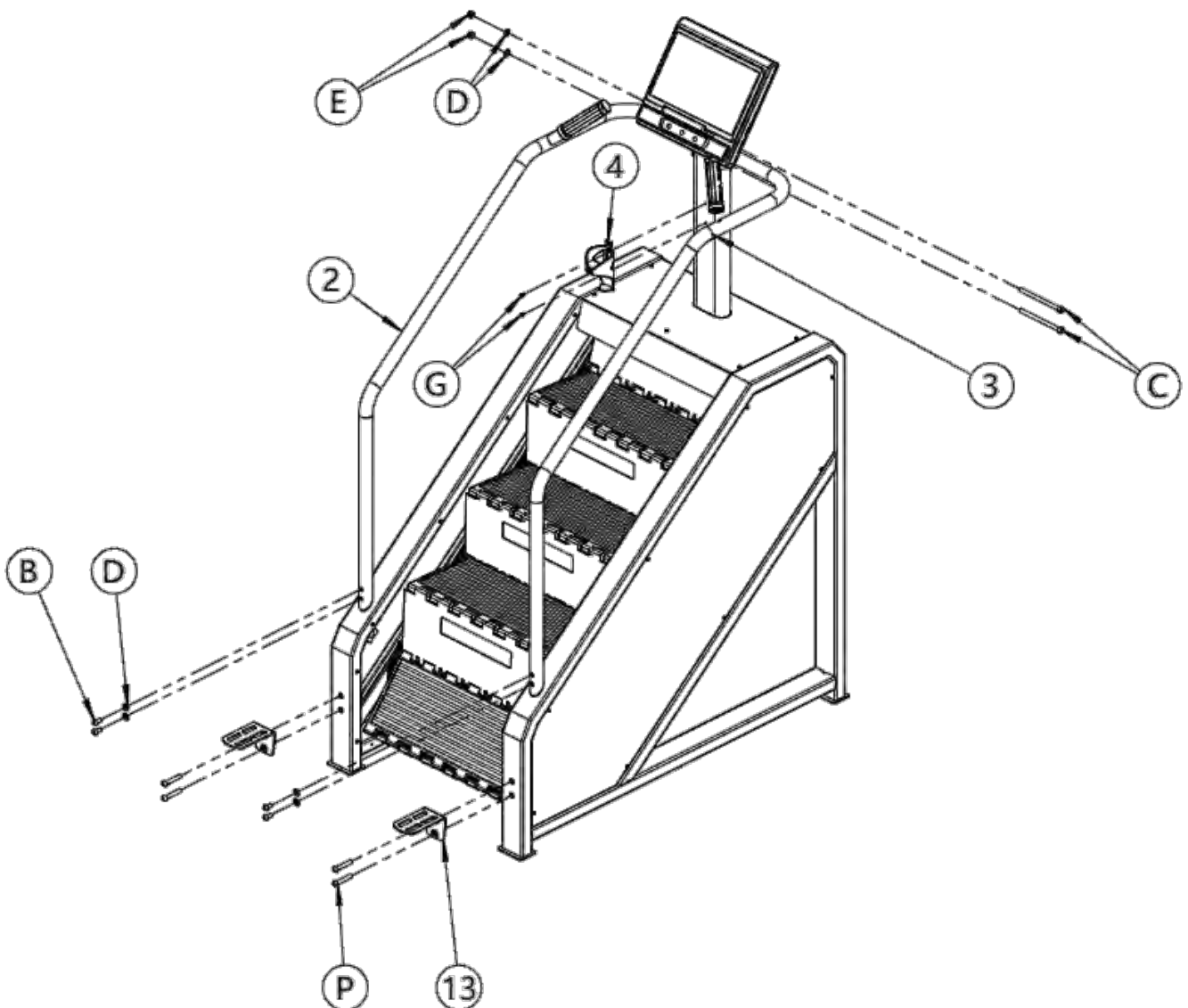
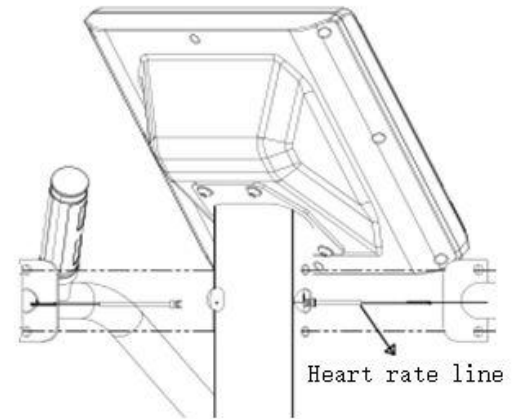
No.1:	Stairmaster main frame	1pc
No.6:	display support assembly	1pc
No.11:	Upper Shroud	1pc
No.12:	Rear guard	1pc
A:	M8X55 cheese head screws	2 pcs
M:	φ8 gasket	2 pcs
F:	M4X8Crossed cheese head screws	15 pcs



## Assembly step 2 :

Part list:

- No.2 left armrest 1pc
- No.3 right armrest 1pc
- No.4 Water Bottle Holder 1pc
- No.13 Footplate 2 pcs
- B:M10X20 flat round head screws 4 pcs
- C:M10X150 cheese head screws 2 pcs
- D:φ10 flat washer 6 pcs
- E:M10 jam nut 2 pcs
- G:M5X10Crossed cheese head screws 2 pcs
- P:M10X60 flat round head screws 4 pcs



## 4. Stair climber operating instructions

The stair machine panel adopts the capacitive touch principle, and the user can use only one touch at a time, and the touch effect is comparable to the mobile phone screen. The surface of the panel is made of acrylic, which is wear-resistant and durable, and has a beautiful color and beautiful appearance. It fully guarantees that there will be no problems such as wear and tear on the paint after a long time of use.



### First, Windows:

1. "TIME/FLOORS" window: display the movement time and climb height. The time is positive from 0:00-99:59. When it is timed to 99:59, it will be cleared and restarted. The climb floors is from 0 to 9999, counting Cleared to 9999 and restarted counting;
2. "CALORIES" window: displays the calorie value of the athlete, counting from 0.00 – 999.9, will be cleared and restarted when counting to 999.9;
3. "STEPS" window: display the number of steps of the athlete, the positive count is 0-999, and will be cleared when the count reaches 999.;
4. "Central dot matrix display area window" This area is WELCOME display area, level and program progress chart, etc.
5. "The green display tube above" is a circular runway with a circle of 400 meters.;
6. "Left LED display area window" This area displays the current motion mode indicator;
7. "Right number key" is the level direct selection button, you can directly input the required level, click to confirm.;


### **Second, Keyboard Function :**

- 1."PROGRAMS" is the program key: in standby mode, press this button to cycle through "BIM", "TIME", "FLOORS", "CALORIES", "Heart Rate";
- 2."RESET" is the return button: press this button to return to the standby interface;
3. "START/STOP": If the power is switched on and safe lock is ok, the treadmill can be started or stopped by pressing this key at anytime.
4. "+" and "-" are the level addition and subtraction keys; the standby state is used to adjust the set value. It is used to adjust the level after starting, and the adjustment range is 1/time.
5. "1, 2, ... 9, 0, Delete, ok" is a level shortcut.

### **Third, Machine debugging process:**

1. Shake the handrail of the machine by hand to confirm that the machine is stable.
2. Turn on the power, energize the machine, step on the stair machine, press all the buttons on the electronic watch, observe whether each button corresponds to the function it indicates, whether the button is valid and the hand feels good;



3. Press the "  " key to start the operation of the stair machine, the running level is 1, then check whether the components of the stair machine are running normally.

### **Fourth, Manual mode:**

In the standby state, directly press the "START/STOP" button, the stair machine runs at level 1 speed, other windows start counting from 0, click "+" "-" button to change the running level, and the running level can also be clicked. The numeric keys are directly input; the Delete button is the undo button, and Ok is the confirmation button;

### **Fifth, Photoelectric switch description**

The photoelectric switch is placed in the lower right corner of the step. When the object is blocked, the stair machine will stop immediately, which is used for safety assurance. When using, ensure that the photoelectric switch has no problem; in non-emergency situations, the photoelectric opening should not be used to achieve the purpose of shutdown;

## **5.Routine maintenance**

### **1、 Clean every day**

It is recommended that you clean the equipment before and after each training session. To remove dust from the equipment, wipe all exposed surfaces later with a soft cloth moistened with the following cleaner;

Note: (1) Read and follow the manufacturer's instructions, especially the dilution instructions, before using any cleaner to clean your fitness equipment. Do not use strong concentrations of concentrates, or any acidic cleaners directly; such cleaners will corrode the protective coating of the equipment. Do not splash or spray water or liquids on any part of the equipment. Wait until the device is completely dry before using the device.

Frequent use of vacuum cleaner to clean the floor underneath the equipment will prevent accumulation

of dust that may affect the operation of the equipment. Use a soft nylon board brush to clean the grooves and pedals of the equipment.

(2) The photoelectric switch is a sensitive component. Dust or deviation in the installation position will cause "Emergency Stop" to appear on the display, rendering the stairlift inoperable. Therefore, it is necessary to ensure that the surface of the photoelectric switch is clean and that it is installed in the correct position;

2、 Daily Inspection Check the equipment at least once a day for the following problems:

- 1、 Belt slippage
- 2、 Loose fasteners
- 3、 Abnormal noise
- 4、 And any other signs that the device may need repair.

3、 Weekly Maintenance Please perform the following maintenance tasks:

- (1) Use water or a washable detergent to clean the tracks and wheels.
- (2) Use a vacuum cleaner or wet mop to clean the floor under the equipment.
- (3) Test all functions of the console, including the heart rate monitor function.
- (4) Check that the equipment is securely fastened to the floor. All legs of the device should be firmly in contact with the floor and the device should not rock or wobble when in use. If this is not the case, please re-level it .

4、 Please be careful when moving the equipment, which is very heavy!

5、 If you plan to move the equipment to a new location, seek help from an adult assistant and use proper lifting techniques. If there are rollers on one end of the equipment, use the rollers to lighten the load on you and the assistant.

6、 It is recommended to use a four-wheeled handling trolley to move the machines.

7、 If you do not want anyone to use the device for a long period of time, perform the following tasks for preservation: place the device properly to avoid damage and do not interfere with other people or other devices.

## 8、 Common fault analysis and handling

Common fault analysis		
Error Code	Cause	Method of exclusion
ER1	Communication error	<p>① Poor contact of the communication line: check whether the pin header of the connector is inserted crookedly or the wire is damaged;</p> <p>② If ① is no problem, the lower control board may be damaged and needs to be replaced.</p>
ER2	machine emergency stop	<p>① The user touches the sensor, which triggers an emergency stop, and presses the button to eliminate it when there is no obstruction;</p> <p>② The bolts of the infrared sensor are loose, the sensor is skewed, and the signal cannot be received normally. It is necessary to adjust the position of the sensor so that the left and right sides of the sensor are facing the receiver, and then press the start button, eliminate faults;</p> <p>③ The photoelectric signal is blocked by dust or other things, the surface of the sensor needs to be cleaned and dried. After cleaning, press start to eliminate the fault;</p> <p>④ The sensor is damaged, replace the new sensor.</p>
ER3	Up control signal not received	<p>① Poor contact of the communication line: check whether the pin header of the connector is inserted crookedly or the wire is damaged;</p> <p>② If ① is no problem, the display board may be damaged and needs to be replaced.</p>