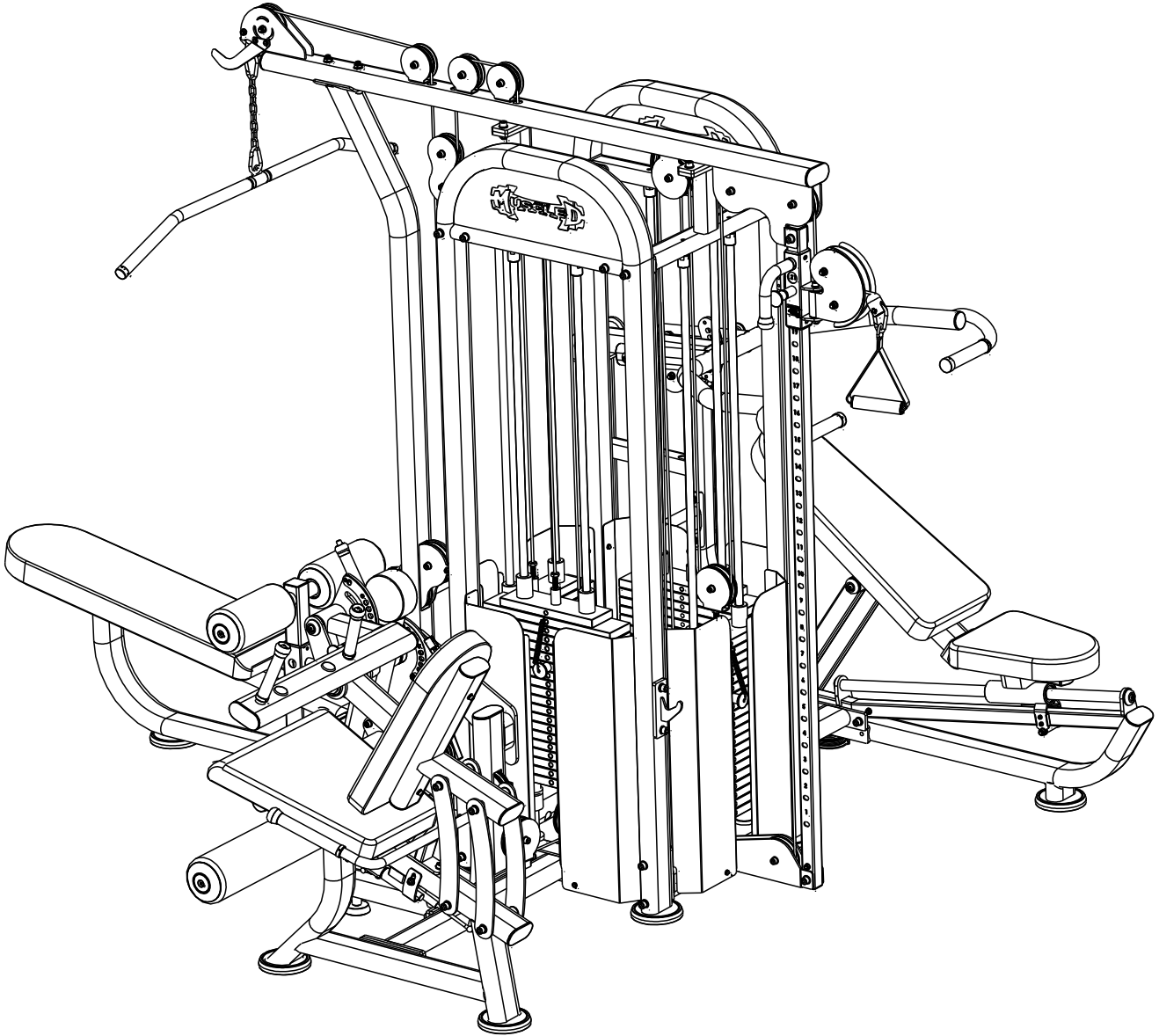




4 Stack Megatron Compact Multi-Gym (MT-MG4)



Installation Manual

www.muscledfit.com

CONTENTS

- 01/ IMPORTANT NOTICE**
- 02/ ASSEMBLY PROCEDURE AND BILL OF MATERIALS**
- 03/ PRODUCT DESCRIPTION**
- 04/ PRODUCT PARAMETERS**
- 05/ MAINTENANCE GUIDELINES**

01/IMPORTANT NOTICE

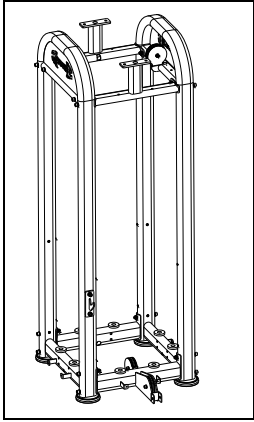
Thank you for choosing our machine! Proper usage is essential for your convenience and safety. Please read the instructions carefully before operating the machine:

1. Before using the machine, please read all user manuals thoroughly and follow the instructions. Keep the manual until the machine is no longer in use.
2. Ensure all users read and understand the safety cautions.
3. Maintain fresh air circulation and provide enough space for users while operating the machine.
4. Keep the machine in good condition by ensuring all fixed parts are tightened and inspecting wear-prone components regularly.
5. Contact the dealer or after-sales department to replace any worn or defective parts; do not operate the machine if it is out of service.
6. Wear appropriate athletic clothing and gym shoes before using the machine; avoid skirts, jewelry, and ensure long hair is tied back to prevent accidents.
7. Perform warm-up exercises before starting your workout.
8. If you experience any unusual symptoms, such as headaches, pain, or nausea, stop exercising and consult a doctor.
9. Children must exercise under adult supervision.
10. **WARNING:** Keep hands and feet away from moving parts.
11. **WARNING:** Do not exceed the adjustable setting range.
12. **WARNING:** Keep babies and pets away from the machine while in use.
13. **WARNING:** Ensure all control devices are positioned correctly.
14. **WARNING:** Operate the machine properly; improper use may hinder workout effectiveness and pose health risks.
15. It is recommended to use the machine in a controlled environment.

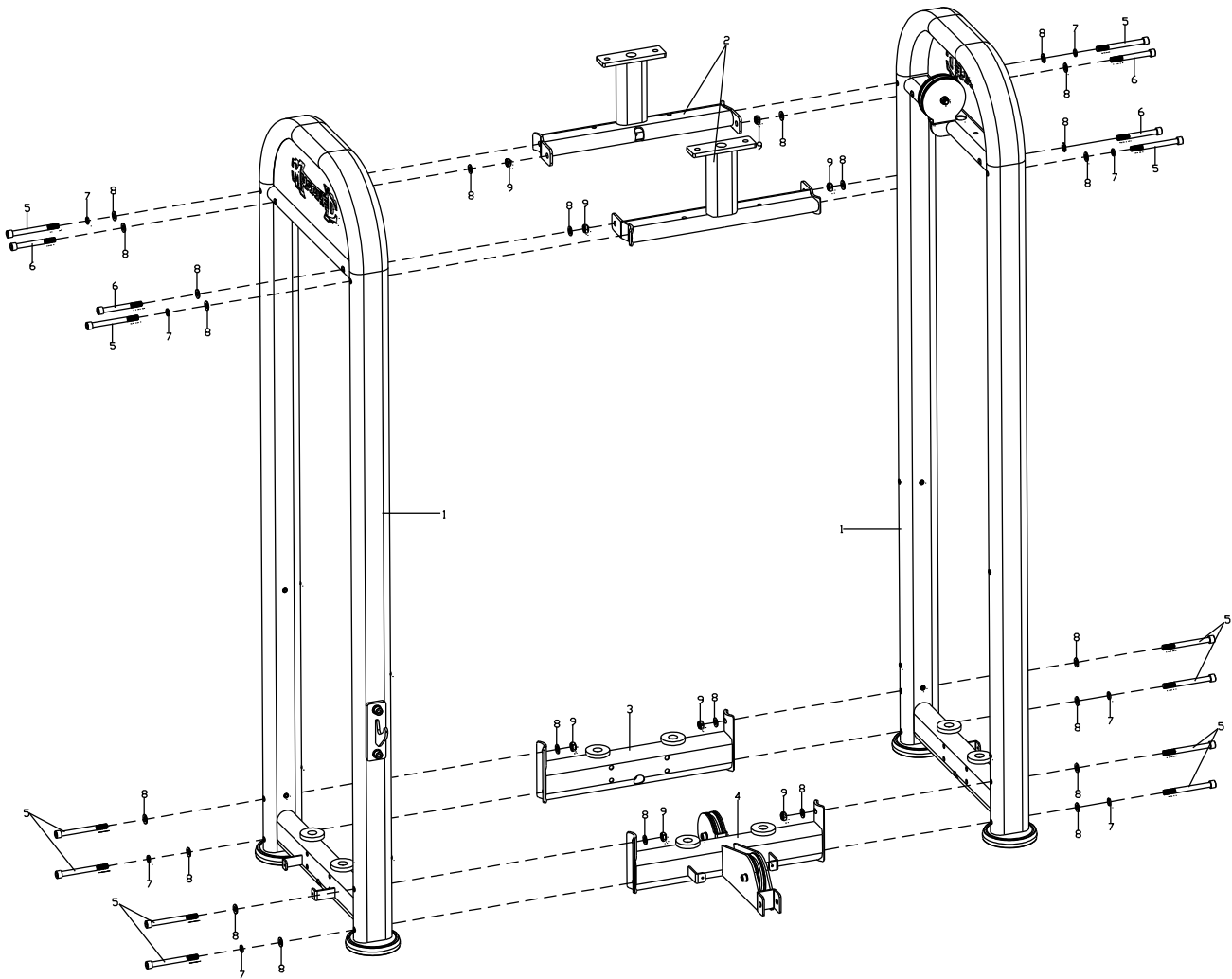
02/ASSEMBLY PROCEDURE

1) Step 1

Finished diagram

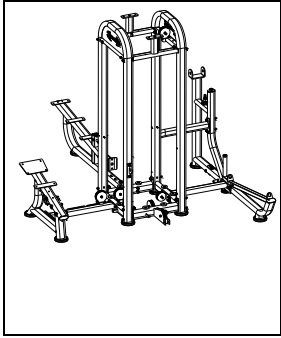


Bill of materials			
No.	Name	Specification	Qty
1	Gantry		2
2	Upper connection support		2
3	Connection fix assembly		1
4	Bottom connection assembly		1
5	Hexagon cylinder socket bolt	M12*120	12
6	Hexagon cylinder socket bolt	M12*105	4
7	Spring washer	Ø12	8
8	Flat washer	Ø12	24
9	Hexagon lock nut	M12	8

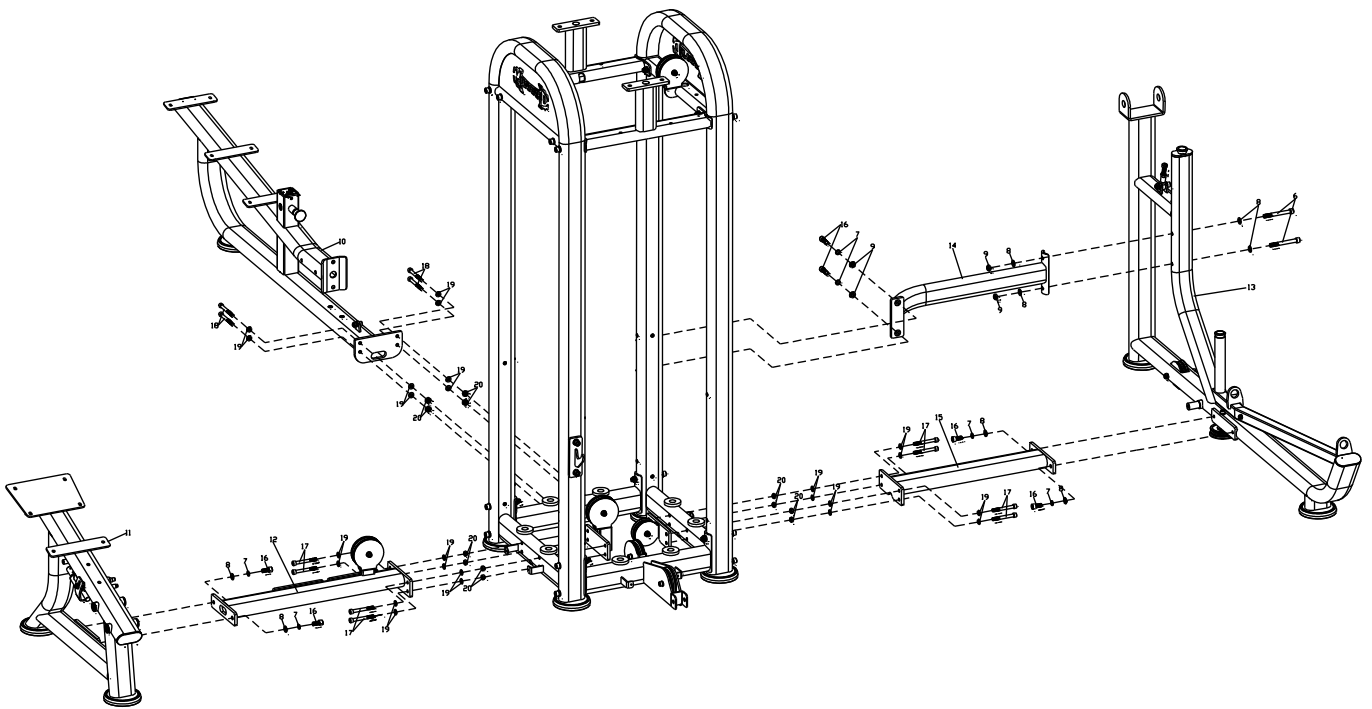


2) Step 2

Finished diagram

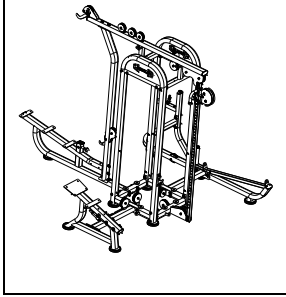


Bill of materials			
No.	Name	Specification	Qty
6	Hexagon cylinder socket bolt	M12*105	2
7	Spring washer	Ø12	6
8	Flat washer	Ø12	6
9	Hexagon lock nut	M12	2
10	Bottom support assembly		1
11	Leg extension assembly		1
12	Bottom connection assembly		1
13	Main frame		1
14	Connection support assembly		1
15	Under connection assembly		1
16	Hexagon cylinder socket bolt	M12*25	6
17	Hexagon cylinder socket bolt	M10*90	8
18	Hexagon cylinder socket bolt	M10*80	4
19	Flat washer	Ø10	24
20	Hexagon lock nut	M10	12



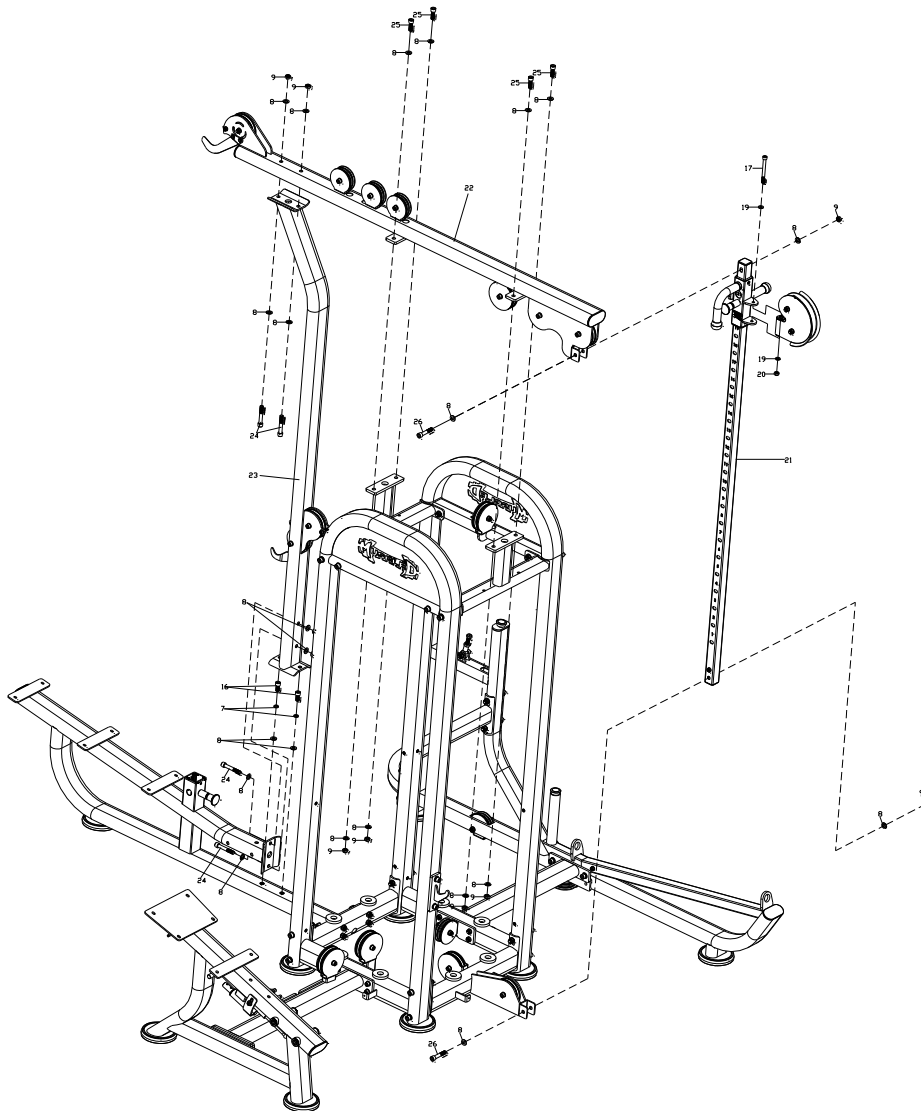
3) Step 3

Finished diagram



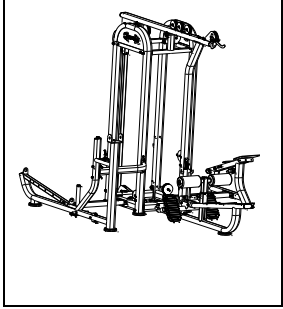
Bill of materials

Name	Specification	Qty
Spring washer	Ø12	2
Flat washer	Ø12	22
Hexagon lock nut	M12	8
Hexagon cylinder socket bolt	M12*25	2
Hexagon cylinder socket bolt	M10*90	1
Flat washer	Ø10	2
Hexagon lock nut	M10	1
Sliding sleeve assembly		1
Gantry upper connection assembly		1
Gantry upper connection assembly		1
Hexagon cylinder socket bolt	M12*75	4
Hexagon cylinder socket bolt	M12*30	4
Hexagon cylinder socket bolt	M12*60	2

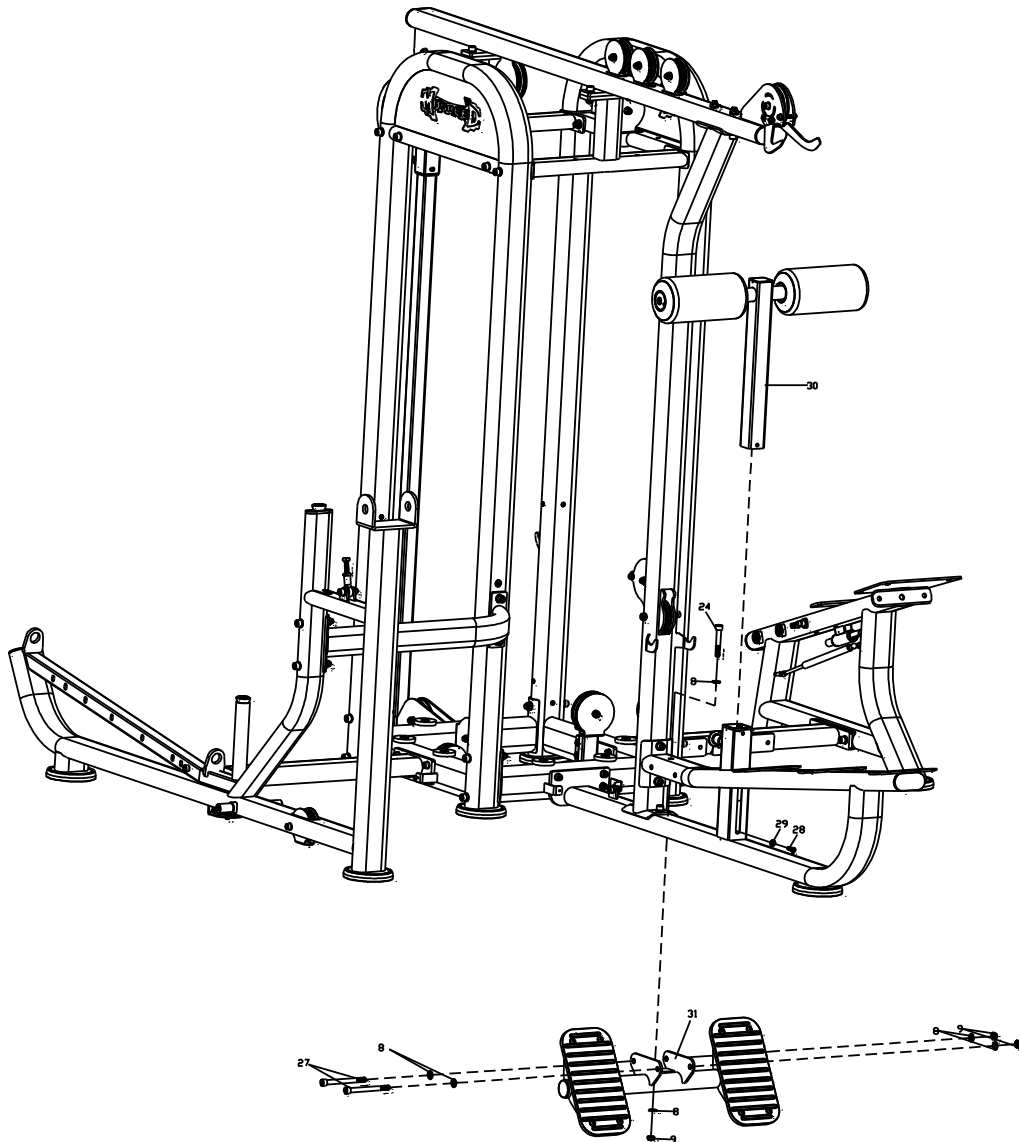


4) Step 4

Finished diagram

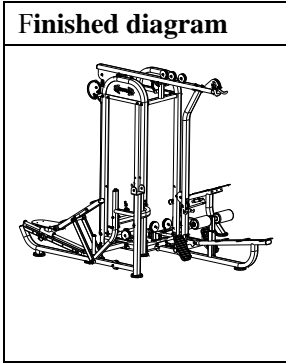


Bill of materials		
Name	Specification	Qty
Flat washer	Ø12	6
Hexagon lock nut	M12	3
Hexagon cylinder socket bolt	M12*75	1
Hexagon cylinder socket bolt	M12*130	2
Hexagon cylinder socket bolt	M8*20	1
Flat washer	Ø8	1
Bottom support assembly		1
Foot pedal		1

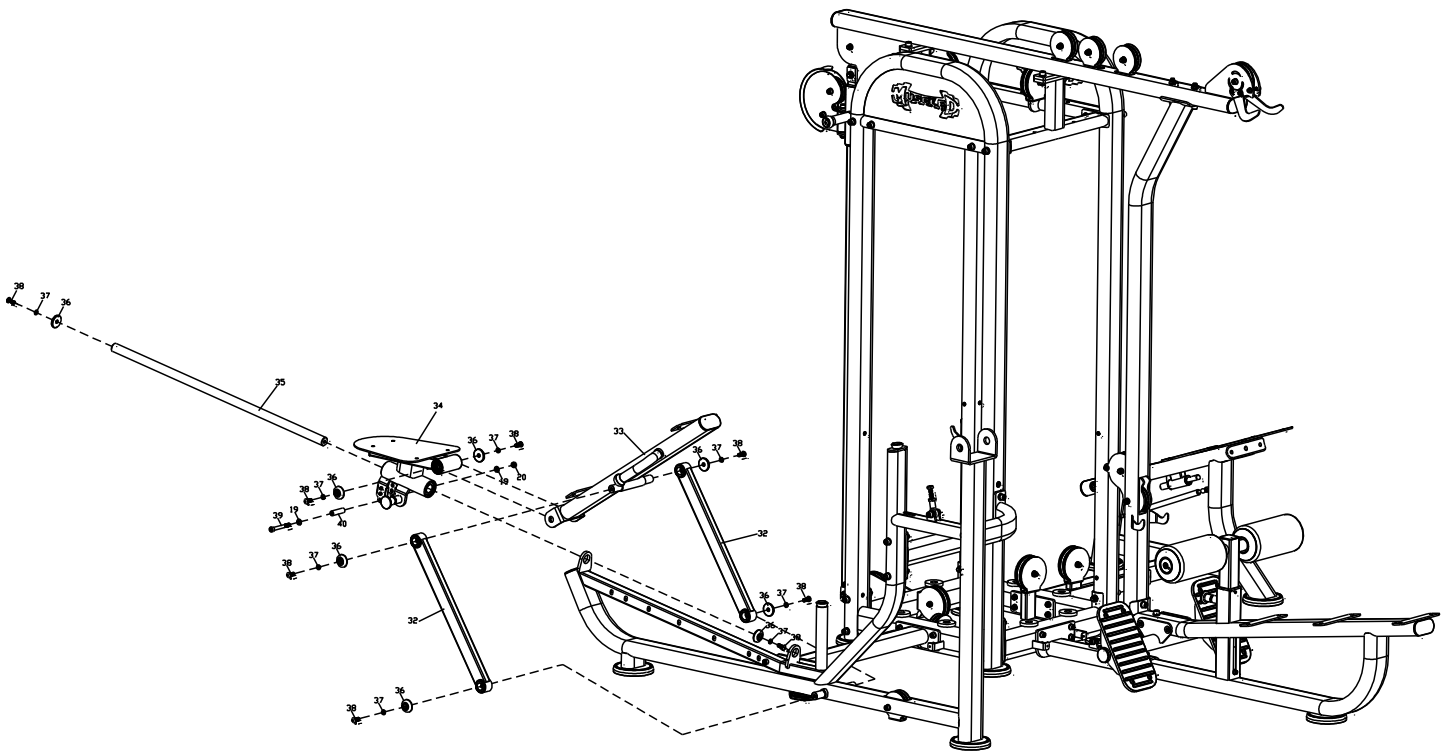


5) Step 5

Finished diagram

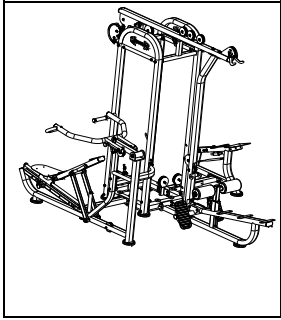


Bill of materials		
Name	Specification	Qty
Flat washer	Ø10	2
Hexagon lock nut	M10	1
Back cushion connection rod		2
Back cushion		1
Seat cushion assembly		1
Guide rod	Ø30*959	1
End cover	Ø43.5*11	8
Spring washer	Ø10	8
Hexagon cylinder socket bolt	M10*25	8
Hexagon cylinder socket bolt	M10*85	1
Support tube	Ø16*58.5	1



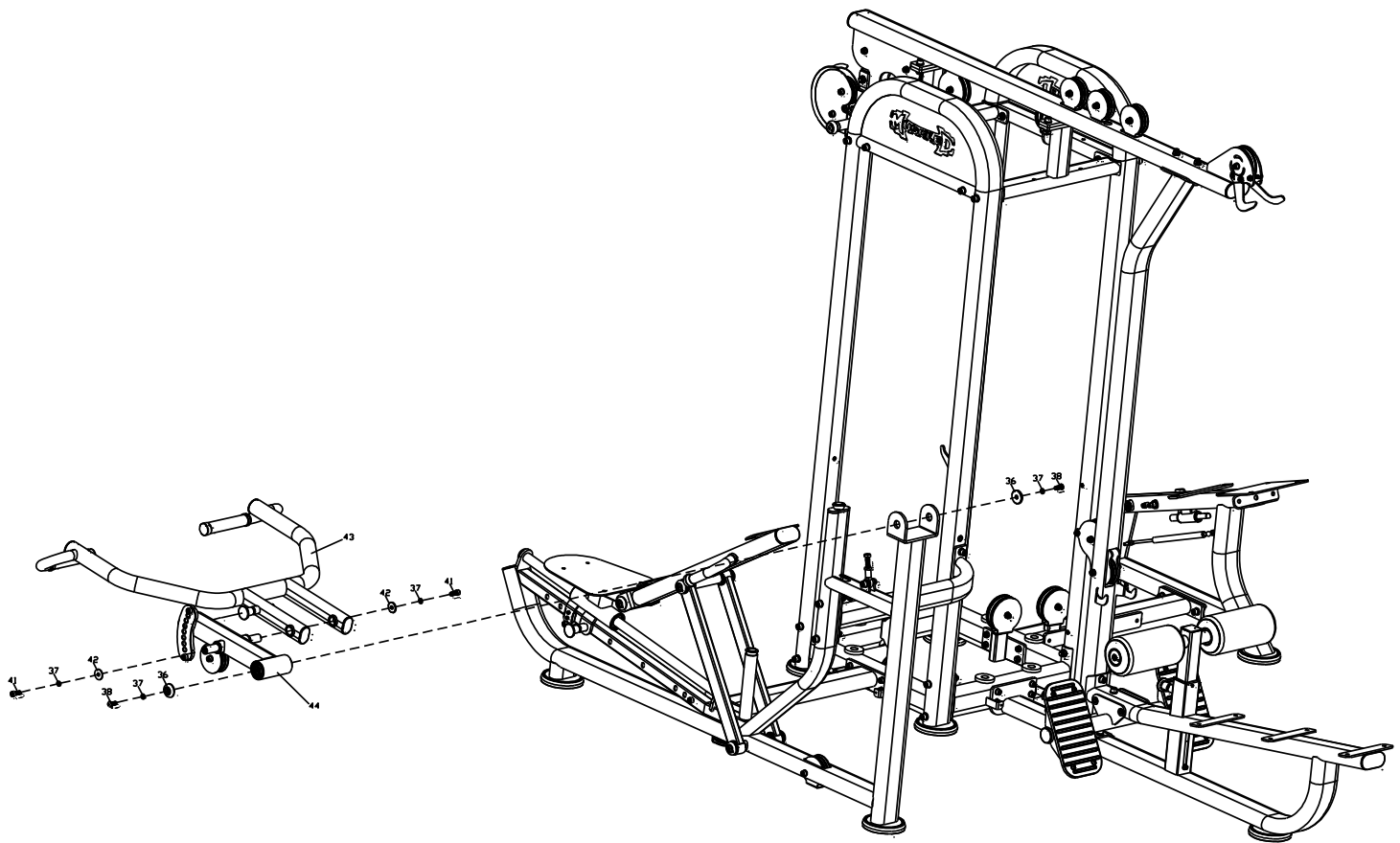
6) Step 6

Finished diagram



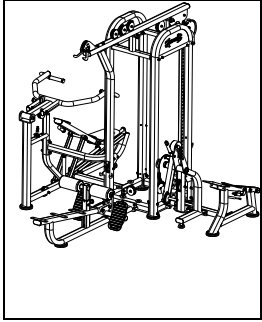
Bill of materials

No.	Name	Specification	Qty
36	End cover	Ø43.5*11	2
37	Spring washer	Ø10	4
38	Hexagon cylinder socket bolt	M10*25	2
41	Hexagon cylinder socket bolt	M10*25	2
42	Large flat washer	Ø 10 OD 34*T3	2
43	Handle		1
44	Rotatable adjust assembly		1

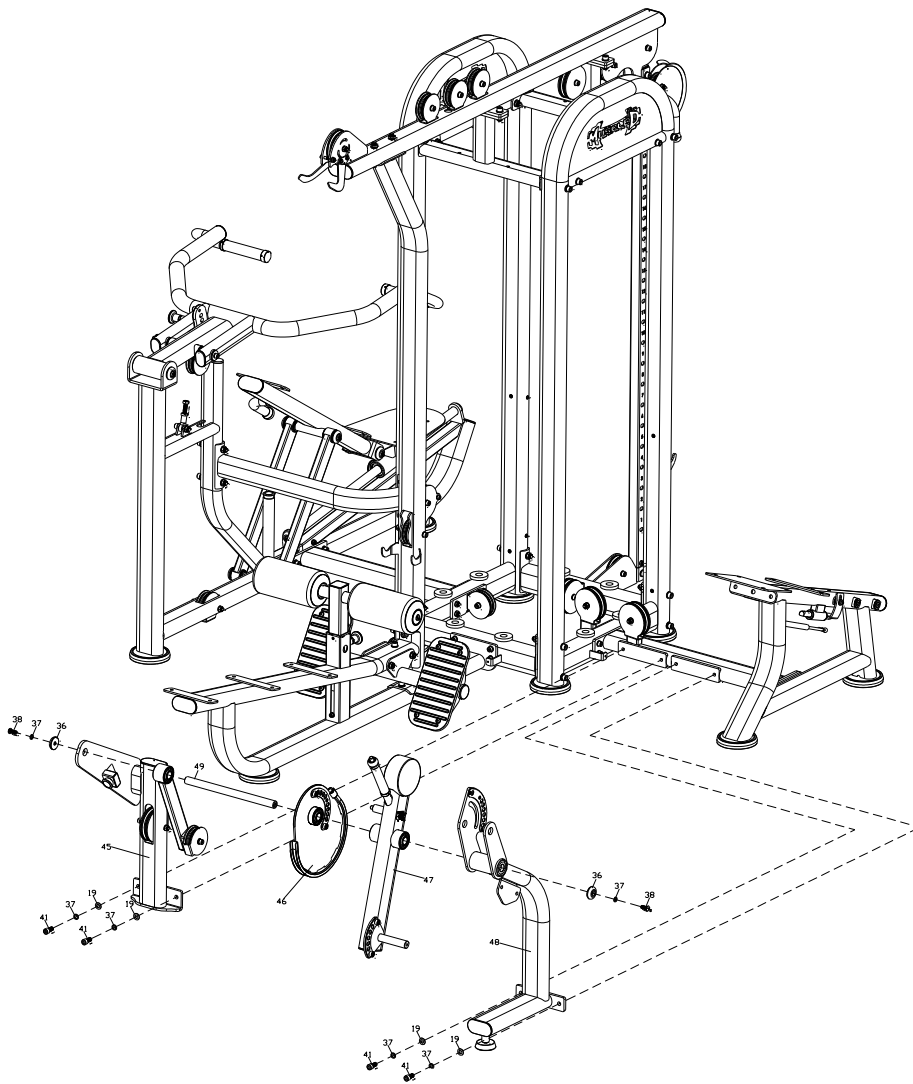


7) Step 7

Finished diagram

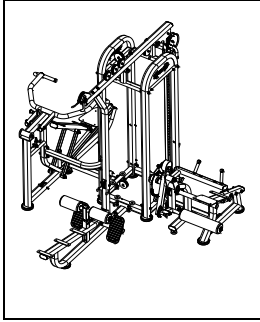


Bill of materials		
Name	Specification	Qty
Flat washer	Ø10	4
End cover	Ø43.5*11	2
Spring washer	Ø10	6
Hexagon cylinder socket bolt	M10*25	2
Hexagon cylinder socket bolt	M10*25	4
Leg extension connection assembly		1
Cam assembly		1
Leg press adjust assembly		1
Cam supporter		1
Fixed shaft	Ø25*372	1



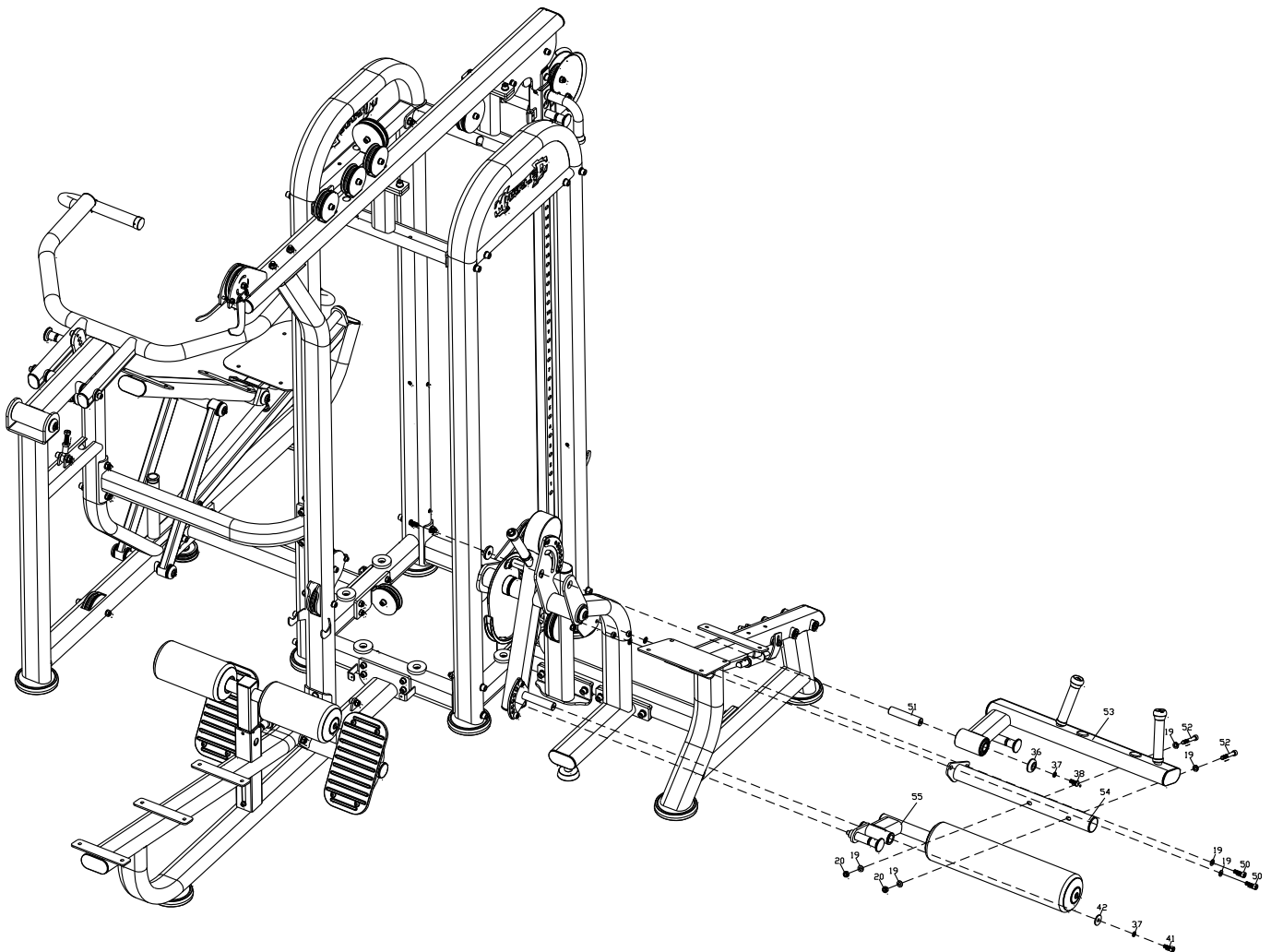
8) Step 8

Finished diagram



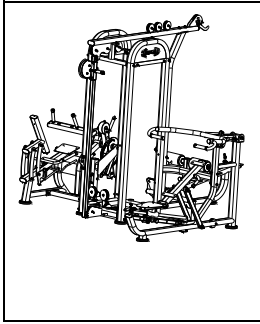
Bill of materials

No.	Name	Specification	Qty
19	Flat washer	Ø10	6
20	Hexagon lock nut	M10	2
36	End cover	Ø43.5*11	1
37	Spring washer	Ø10	2
38	Hexagon cylinder socket bolt	M10*25	1
42	Large flat washer	Ø 10 OD 34*T3	1
50	Hexagon cylinder socket bolt	M10*30	2
51	Fixed shaft	Ø25*115	1
52	Hexagon cylinder socket bolt	M10*70	2
53	Leg press assembly		1
54	Connection tube		1
55	Leg press adjust assembly		1

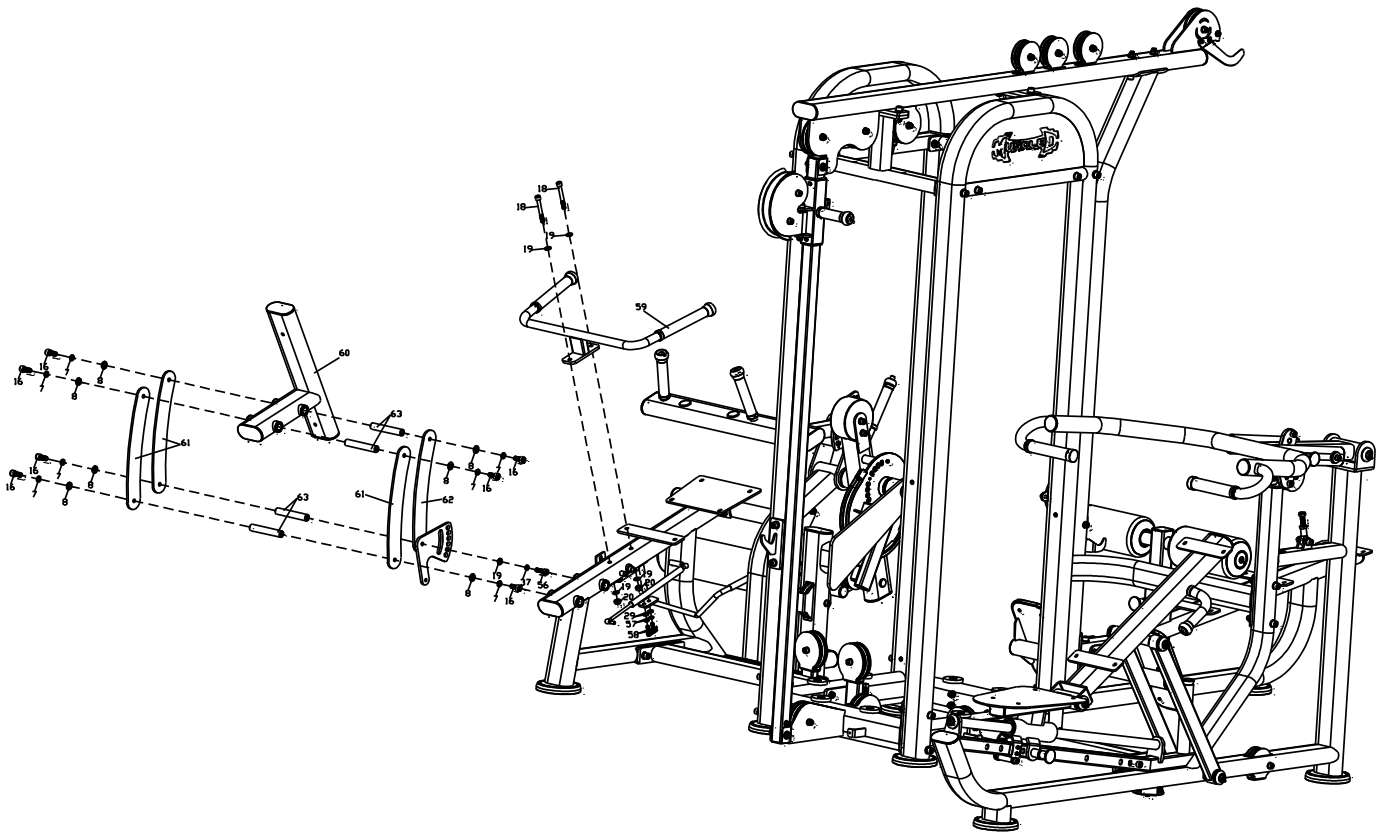


9) Step 9

Finished diagram

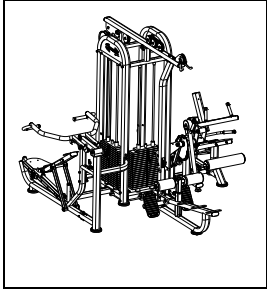


Bill of materials			
No.	Name	Specification	Qty
7	Spring washer	Ø12	7
8	Flat washer	Ø12	7
16	Hexagon cylinder socket bolt	M12*25	7
18	Hexagon cylinder socket bolt	M10*80	2
19	Flat washer	Ø10	5
20	Hexagon lock nut	M10	2
29	Flat washer	Ø8	2
37	Spring washer	Ø10	1
56	Hexagon cylinder socket bolt	M10*35	1
57	Spring washer	Ø8	2
58	Hexagon cylinder socket bolt	M8*25	2
59	Hadle frame		1
60	back cushion frame		1
61	Connection plate	385*70*T6	3
62	Back chsion adjust frame		1
63	Fixed shaft	Ø20*125	4



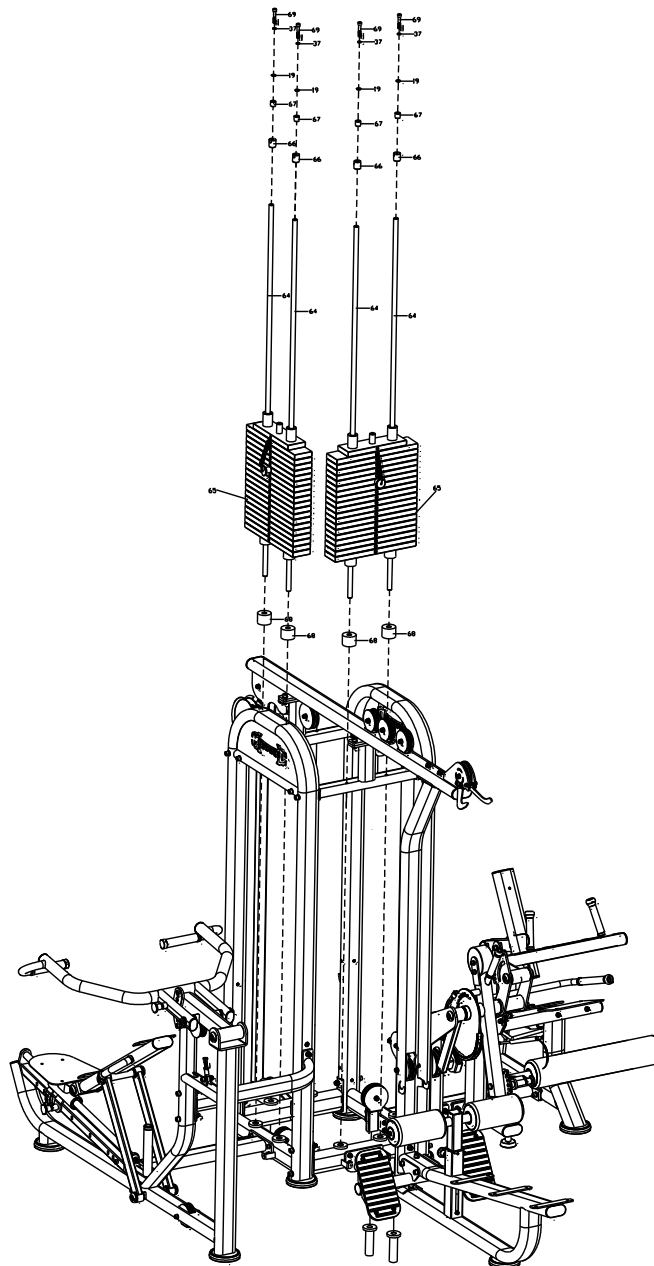
10) Step 10

Finished diagram



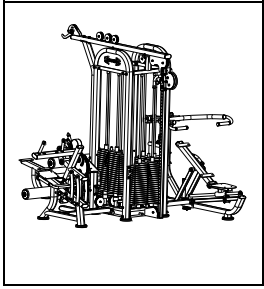
Bill of materials

No.	Name	Specification	Qty
19	Flat washer	Ø10	4
37	Spring washer	Ø10	4
64	Guide rod	Ø20*1740	4
65	Weight stack		2
66	Guide rod fixed sleeve	Φ30*33	4
67	Guide rod spacer sleeve	Φ24*25	4
68	Crash pad	φ 50* φ 22*45	4
69	Hexagon cylinder socket bolt	M10*55	4



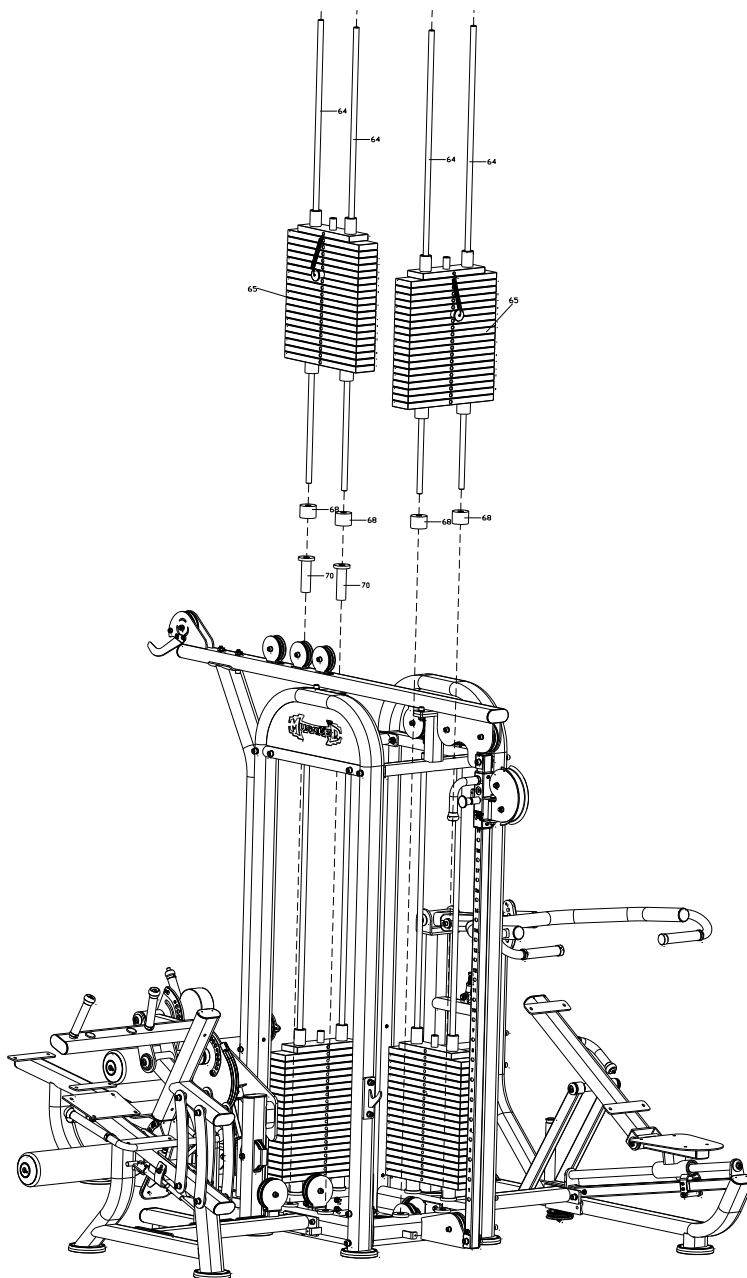
11) Step 11

Finished diagram



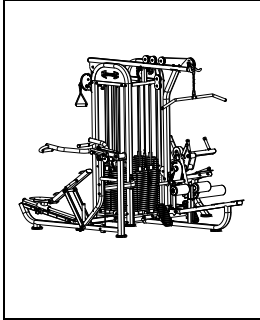
Bill of materials

No.	Name	Specification	Qty
19	Flat washer	Ø10	4
37	Spring washer	Ø10	4
64	Guide rod	Ø20*1740	4
65	Weight stack		2
66	Guide rod fixed sleeve	Φ30*33	4
67	Guide rod spacer sleeve	Φ24*25	4
68	Crash pad	φ 50* φ 22*45	4
69	Hexagon cylinder socket bolt	M10*55	4
70	Weight stack supporter		2



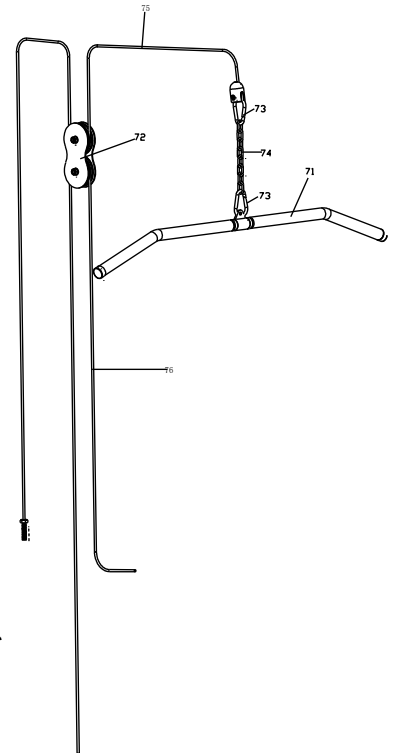
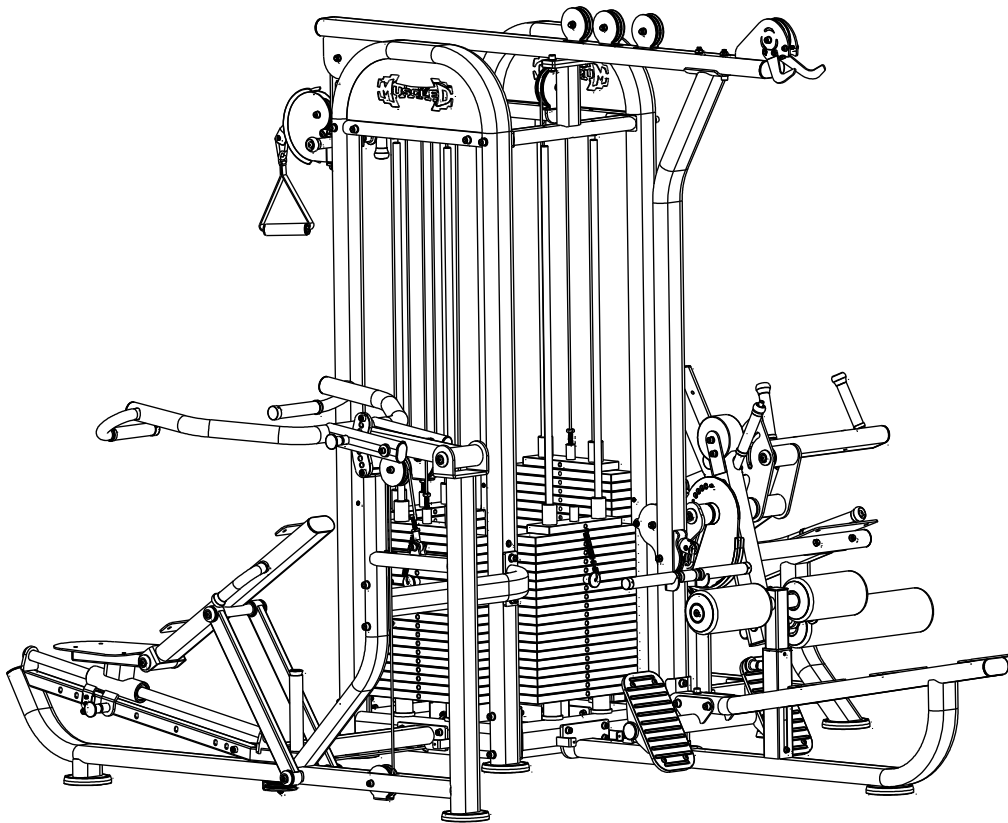
12) Step 12

Finished diagram



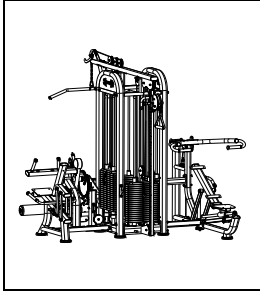
Bill of materials

Name	Specification	Qty
at Pull weldment		1
ial pulley		1
oist hook	50*82*Φ8	2
on chain	39*21*Ø6*8 pcs (L250)	1
cable assembly		1
cable assembly		1



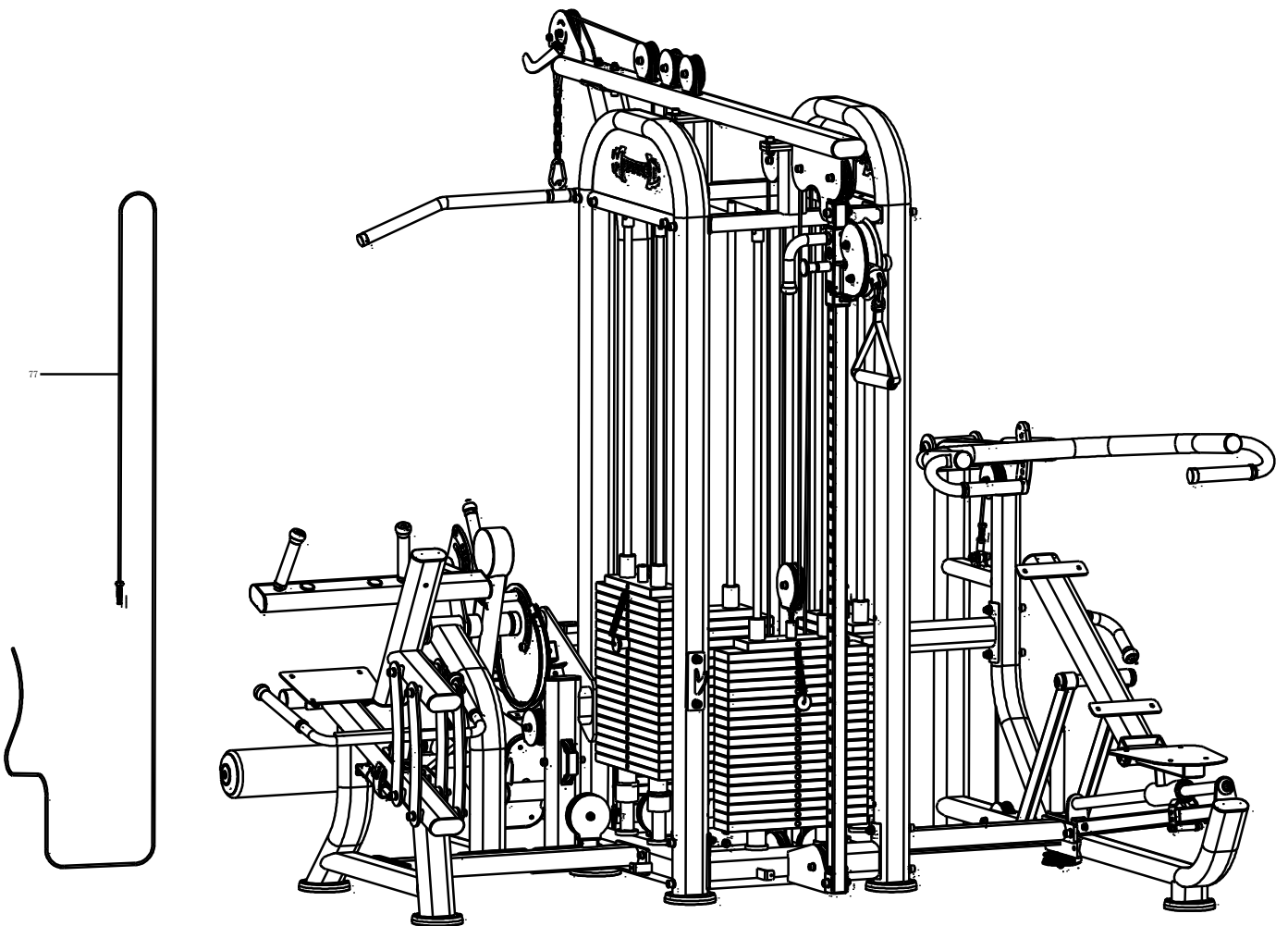
13) Step 13

Finished diagram



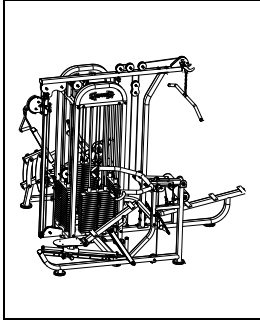
Bill of materials

No.	Name	Specification	Qty
77	#5 cable assembly		1



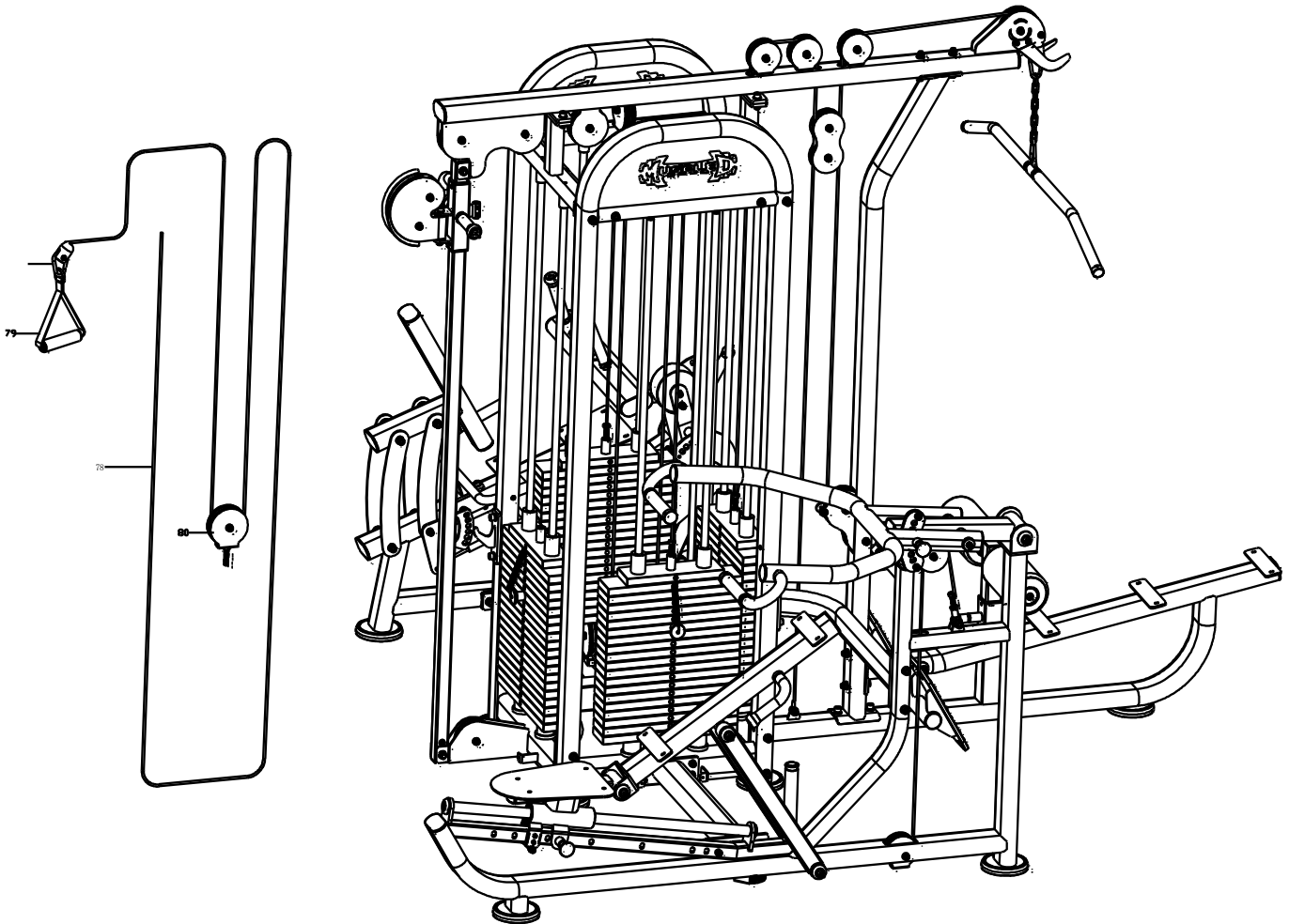
14) Step 14

Finished diagram



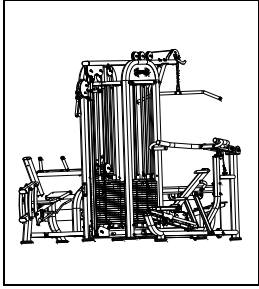
Bill of materials

No.	Name	Specification	Qty
73	Hoist hook	50*82*Φ8	1
78	#4 cable assembly		1
79	Handle		1
80	Pulley		1



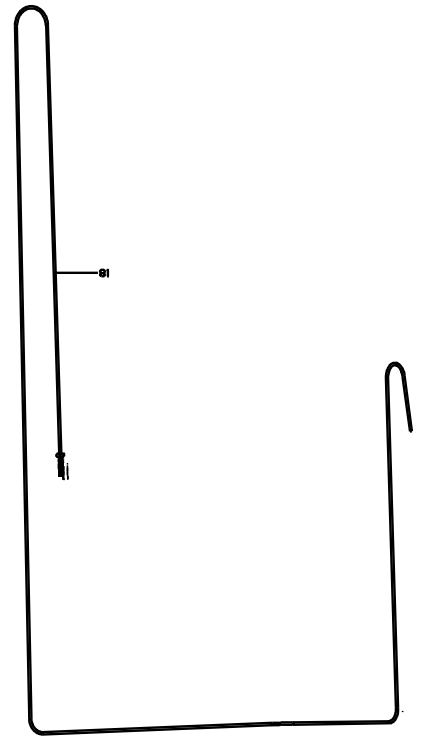
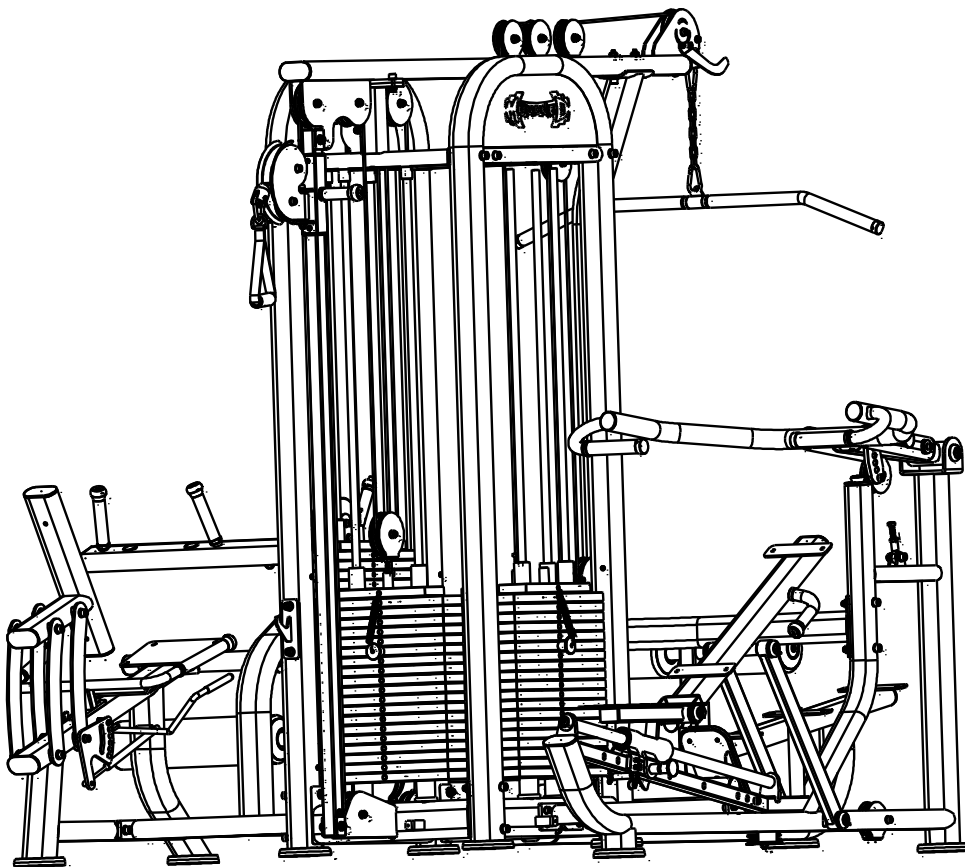
15) Step 15

Finished diagram



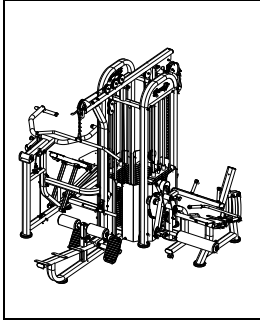
Bill of materials

No.	Name	Specification	Qty
81	#3 cable assembly		1



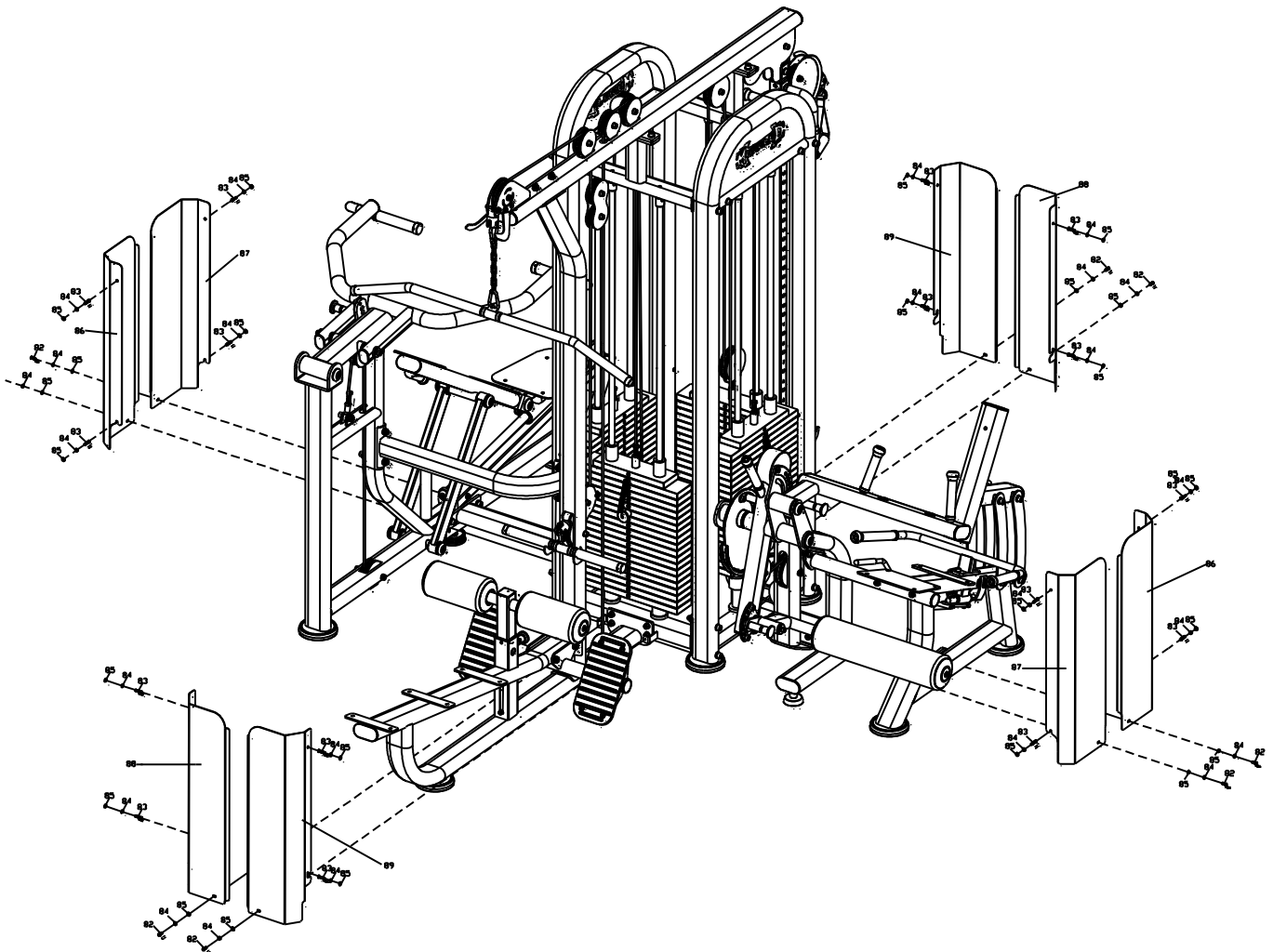
16) Step 16

Finished diagram



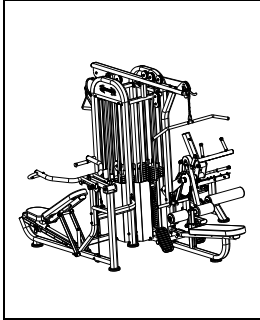
Bill of materials

No.	Name	Specification	Qty
82	Hexagon cylinder flat bolt	M6*16	8
83	Hexagon cylinder flat bolt	M6*25	16
84	Spring washer	Ø6	24
85	Flat washer	Ø6	24
86	Safety board 3	750*313.6*T2	2
87	Safety board	750*313.6*T2	2
88	Safety board 2	750*280.7*T2	2
89	Safety board 4	750*280.7*T2	2



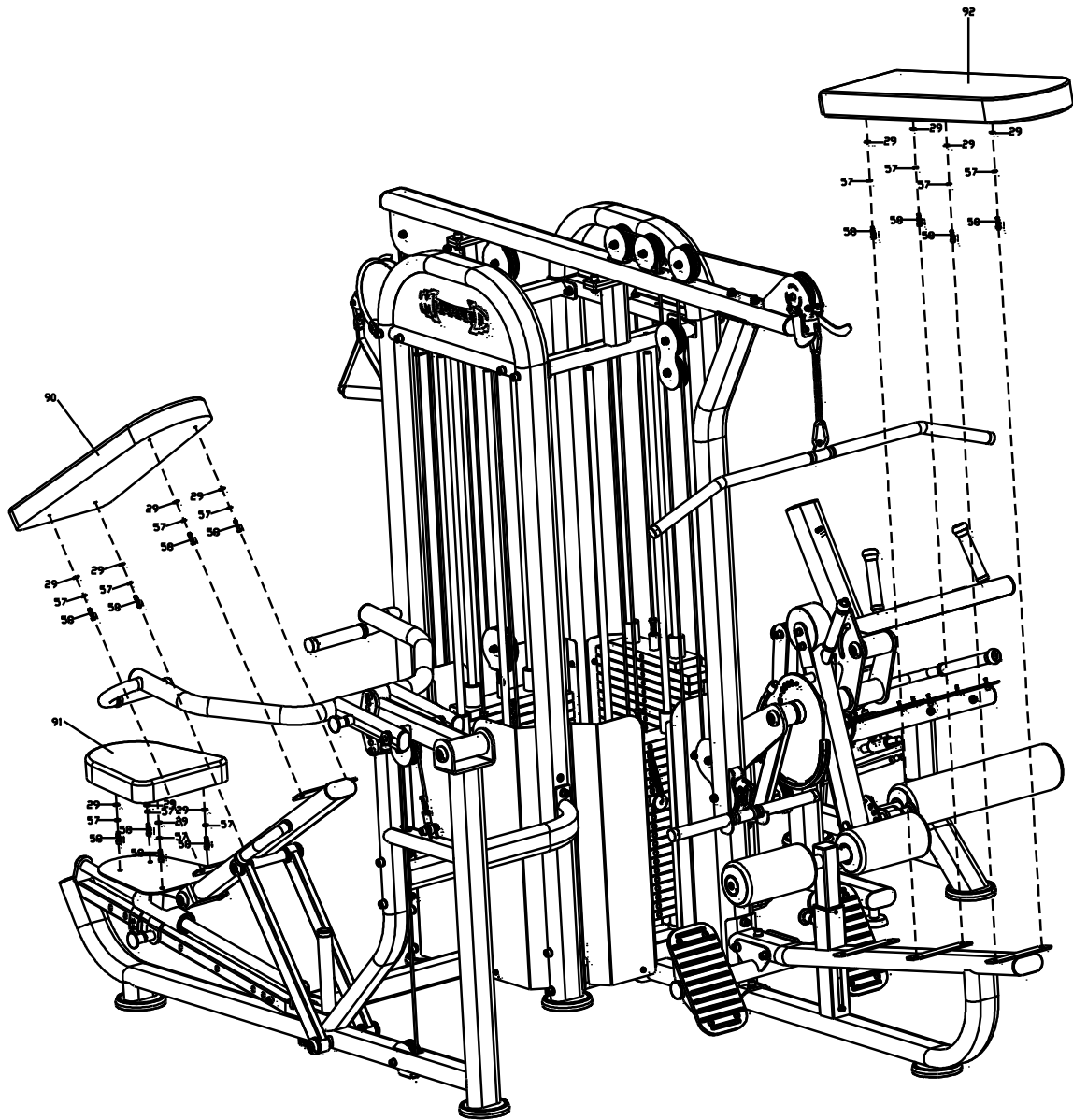
17) Step 17

Finished diagram



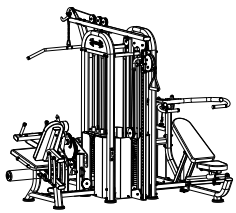
Bill of materials

No.	Name	Specification	Qty
29	Flat washer	Ø8	12
57	Spring washer	Ø8	12
58	Hexagon cylinder socket bolt	M8*25	12
90	Back cushion	750*330*60	1
91	Seat cushion	370*330*60	1
92	Back cushion	270*900*T65	1



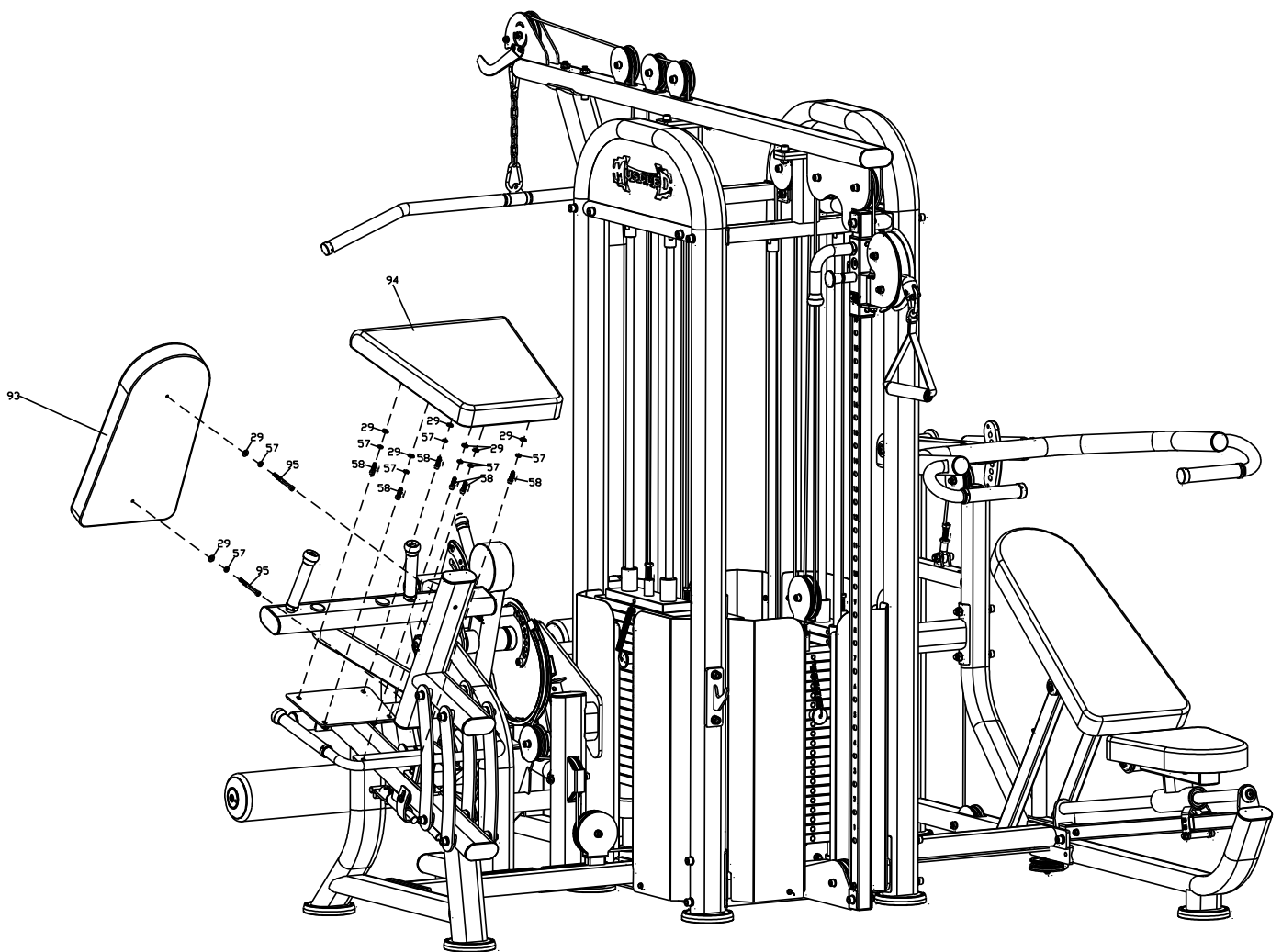
18) Step 18

Finished diagram



Bill of materials

No.	Name	Specification	Qty
29	Flat washer	Ø8	8
57	Spring washer	Ø8	8
58	Hexagon cylinder socket bolt	M8*25	6
93	Back cushion	560*300*60	1
94	Seat cushion	485*470*60	1
95	Hexagon cylinder socket bolt	M8*70	2



03/ PRODUCT DESCRIPTION

This indoor fitness machine is perfect for aerobic workouts, focusing on cardiovascular health while also aiding in muscle training. It effectively targets the pectoral muscles and supports overall bodybuilding and fitness. With clear operational instructions and a user-friendly functional diagram, adjusting the resistance via the weight stack is simple. Designed to align with the natural movement of the body, this machine prioritizes both safety and durability.

04/ PRODUCT PARAMETER

Name	4 Stack Megatron Compact Multi-Gym	Model	MT-MG4
Dimensions	120" L x 112" W x 88" H		
Net weight	2300 lb		

05/ MAINTENANCE GUIDELINE

1. Regularly inspect all bolts and screws to ensure they are tight, and check that rotating parts move smoothly without any unusual sounds.
2. Keep the machine clean, and avoid using strong cleaning solvents.
3. Immediately repair or replace any worn or damaged parts that bear stress.